

# 3341 SYCAMORE PLACE

Carmel



**CARMEL REALTY COMPANY**  
ESTABLISHED 1913

— A Cornerstone in Luxury Real Estate for Over 100 Years —

PROPERTY DETAILS



APPROX. SQ. FOOTAGE

1,556 sq. ft.

BEDROOMS

Three

PRICE

\$1,685,000

BUYER CONCESSION

Yes\*

APPROX LOT SIZE

5,500 sq. ft.

BATHROOMS

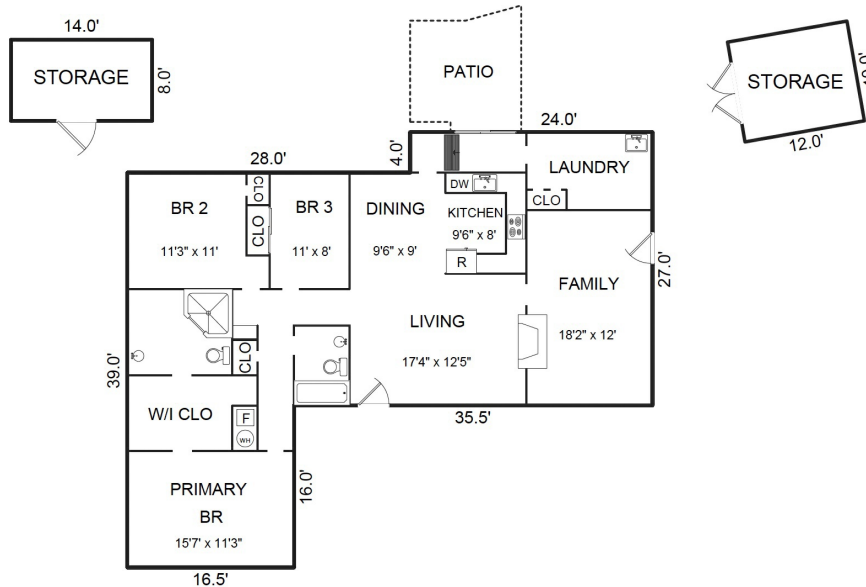
Two

WEBSITE

3341SycamorePlace.com

PROPERTY DESCRIPTION

**N**estled at the end of a quiet cul-de-sac in Mission Fields, this charming home offers privacy and functionality. Surrounded by hedges, it boasts a light-filled interior with an open floor plan and vaulted ceilings in the main living area. Hardwood floors flow through most of the house, complementing the cozy stone fireplace that enhances the living, dining, and kitchen spaces. The spacious primary suite includes a generous walk-in closet. A converted garage serves as a versatile family room, ideal for kids or a home office. The pie-shaped yard offers ample space in the back corners for a playground, hobby area, or storage in the well-crafted sheds. With plenty of driveway parking, this property is as practical as it is inviting.



Square footage, acreage, and other information herein may have been received from a variety of sources and has not been verified. If important to buyers, buyers should conduct their own investigation.

\*Seller is willing to consider offers requesting Buyer Concessions. This amount is negotiable and only binding once agreed upon by all parties.

CONTACT INFORMATION

**Judie Profeta**

831.601.3207

Judie@TheProfetaTeam.com

DRE# 00703550

[www.theprofetateam.com](http://www.theprofetateam.com)

[WWW.CARMELREALTYCOMPANY.COM](http://WWW.CARMELREALTYCOMPANY.COM)



**CARMEL REALTY COMPANY**  
ESTABLISHED 1913



Dolores South of Seventh ■ P.O. Drawer C  
Carmel-by-the-Sea, California, 93921  
Office: 831.622.1000 ■ Fax: 831.624.7338