

1168 ARROYO DRIVE

Pebble Beach



CARMEL REALTY COMPANY
ESTABLISHED 1913

— A Cornerstone in Luxury Real Estate for Over 100 Years —

PROPERTY DETAILS



APPROX. SQ. FOOTAGE

2,814 sq. ft.

BEDROOMS

Three

PRICE

\$3,650,000

APPROX LOT SIZE

9,500 sq. ft.

BATHROOMS

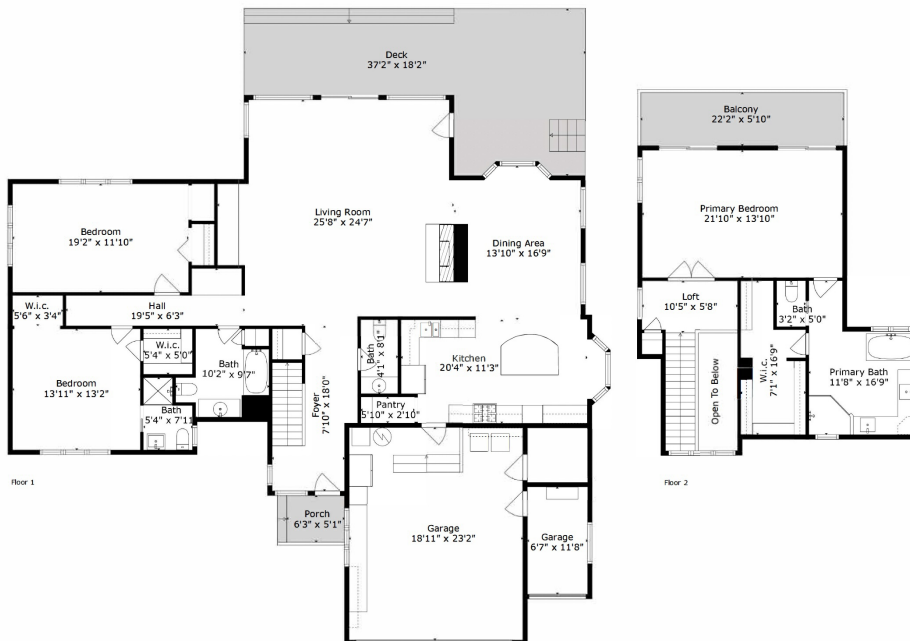
Three Full & One Half

WEBSITE

1168ArroyoDrive.com

PROPERTY DESCRIPTION

Turnkey home on the Monterey Peninsula Country Club golf course location at its finest! Enjoy frontline views of the MPCC Dunes Course 3rd hole from the second floor balcony, main floor deck with fire-pit and floor to ceiling windows. Natural light abounds throughout the main floor great room area with an updated kitchen, separate dining area that opens to a spacious living room with high ceilings and a fireplace. The main floor features a comfortable suite with walk-in closet plus another large bedroom that could easily be converted to a main floor primary suite or back to its original design as two separate bedrooms. The private second floor primary suite is an ideal retreat with golf course and sunset views, a spa like bathroom plus a large walk-in closet. The two car plus a cart garage is ideal for this location on a quiet street close to MPCC, Spanish Bay and the many seaside walking paths along the ocean!



Square footage, acreage, and other information herein may have been received from a variety of sources and has not been verified. If important to buyers, buyers should conduct their own investigation.

CONTACT INFORMATION

Peter Butler

831.277.7229

Peter@PeterButlerProperties.com

DRE# 01222453

www.PeterButlerProperties.com

www.CARMELREALTYCOMPANY.COM



CARMEL REALTY COMPANY
ESTABLISHED 1913



Dolores South of Seventh ■ P.O. Drawer C
Carmel-by-the-Sea, California, 93921
Office: 831.622.1000 ■ Fax: 831.624.7338