

# 2922 BIRD ROCK ROAD

Pebble Beach



**CARMEL REALTY COMPANY**  
ESTABLISHED 1913

— A Cornerstone in Luxury Real Estate for Over 100 Years —

PROPERTY DETAILS



APPROX. SQ. FOOTAGE

2,800 sq. ft.

BEDROOMS

4

PRICE

\$3,495,000

APPROX LOT SIZE

9,300 sq. ft.

BATHROOMS

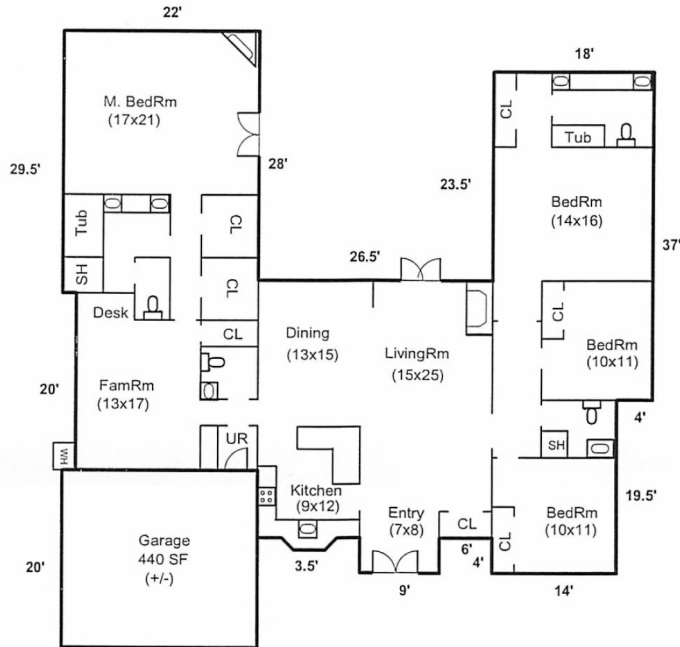
3.5

WEBSITE

2922BirdRockRoad.com

PROPERTY DESCRIPTION

**B**eautiful 2800sqft single level residence on the 3rd fairway of the Dunes golf course at Monterey Peninsula Country Club. 4 beds, 3.5 baths with an open layout and two primary suites. Timelessly remodeled with elegant finishes. Private back patio with fireplace overlooks the fairway and offers excellent outdoor entertaining.



Square footage, acreage, and other information herein may have been received from a variety of sources and has not been verified. If important to buyers, buyers should conduct their own investigation.

CONTACT INFORMATION

**Heinrich Brooksher Real Estate Group**

831.292.5097

Team@HeinrichBrooksher.com

DRE#70010280

[www.heinrichbrooksher.com](http://www.heinrichbrooksher.com)

[www.CARMEIREALTYCOMPANY.COM](http://www.CARMEIREALTYCOMPANY.COM)



**CARMEL REALTY COMPANY**  
ESTABLISHED 1913



Dolores South of Seventh ■ P.O. Drawer C  
Carmel-by-the-Sea, California, 93921  
Office: 831.622.1000 ■ Fax: 831.624.7338