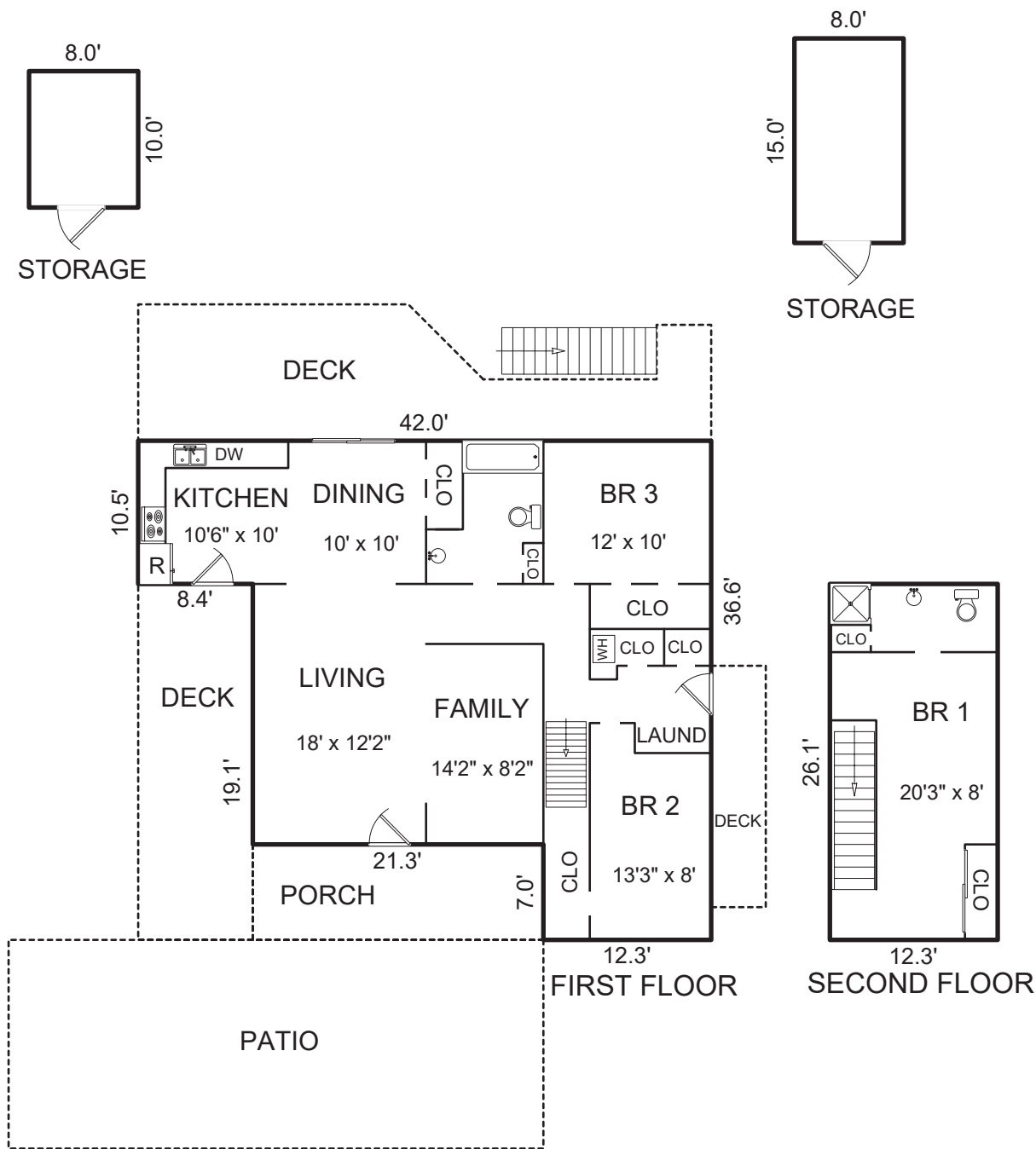


# 24658 PESCADERO ROAD, CARMEL, CA 93923



### AREA CALCULATIONS (approximate)

First Floor:	1,169sf
Second Floor:	279
<b>Net Livable Area:</b>	<b>1,448sf</b>
Storage:	120
Storage:	80
Patio:	600
Porch:	149
Deck:	329
Deck:	212
Deck:	71