

2416 BAY VIEW AVENUE

Carmel



CARMEL REALTY COMPANY
ESTABLISHED 1913

— A Cornerstone in Luxury Real Estate for Over 100 Years —

PROPERTY DETAILS



APPROX. SQ. FOOTAGE

2,566 sq. ft.

BEDROOMS

Three

PRICE

\$6,950,000

APPROX LOT SIZE

4,000 sq. ft.

BATHROOMS

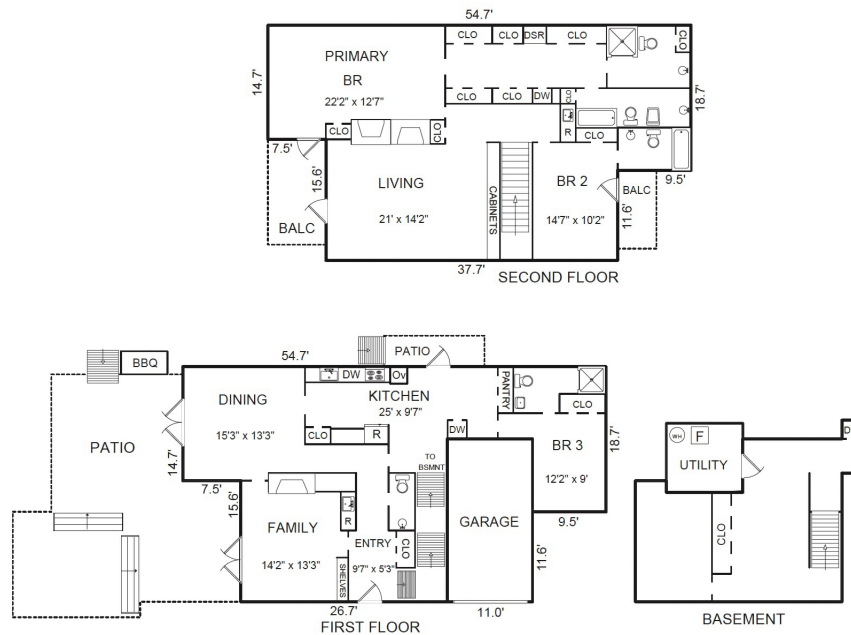
Four Full & One Half

WEBSITE

2416BayViewAvenue.com

PROPERTY DESCRIPTION

Perhaps needing its own thesaurus to adequately describe, 'Point of View' on the high side corner of Bay View and Martin Way offers a booklet of features and attributes sought after and often so hard to find. Point of View offers the curvature of the beach, a seemingly endless yardage of green fairways of Pebble Beach and the glow of year-round sunsets to the West, all set just 300 feet from the stairs down to the beach, where a walk on the white sands is enticingly always at hand. With nearly 2,600 square feet of living space within and being set on the lot so the South and West light shine brightly in, the interior volume with high ceilings upstairs and down, give an extra feeling of an abundance of space all around. Featuring three suites including a primary with two baths, a large living room with walls of windows, a cozy family room den, a dining room large enough for all and an abundance of outdoor patio space for entertaining delight. Three fireplaces, real hardwood floors, two balconies and a nearly 500 square foot basement with high ceilings all pitch in to making this home a rare and treasured find.



Square footage, acreage, and other information herein may have been received from a variety of sources and has not been verified. If important to buyers, buyers should conduct their own investigation.

CONTACT INFORMATION

Jamal Noorzoy

831.277.5544

Jamal@CarmelRealtyCompany.com

DRE# 01119622

www.JamalNoorzoyLuxuryRE.com

[WWW.CARMEIREALTYCOMPANY.COM](http://www.CARMEIREALTYCOMPANY.COM)



CARMEL REALTY COMPANY
ESTABLISHED 1913



Dolores South of Seventh ■ P.O. Drawer C
Carmel-by-the-Sea, California, 93921
Office: 831.622.1000 ■ Fax: 831.624.7338