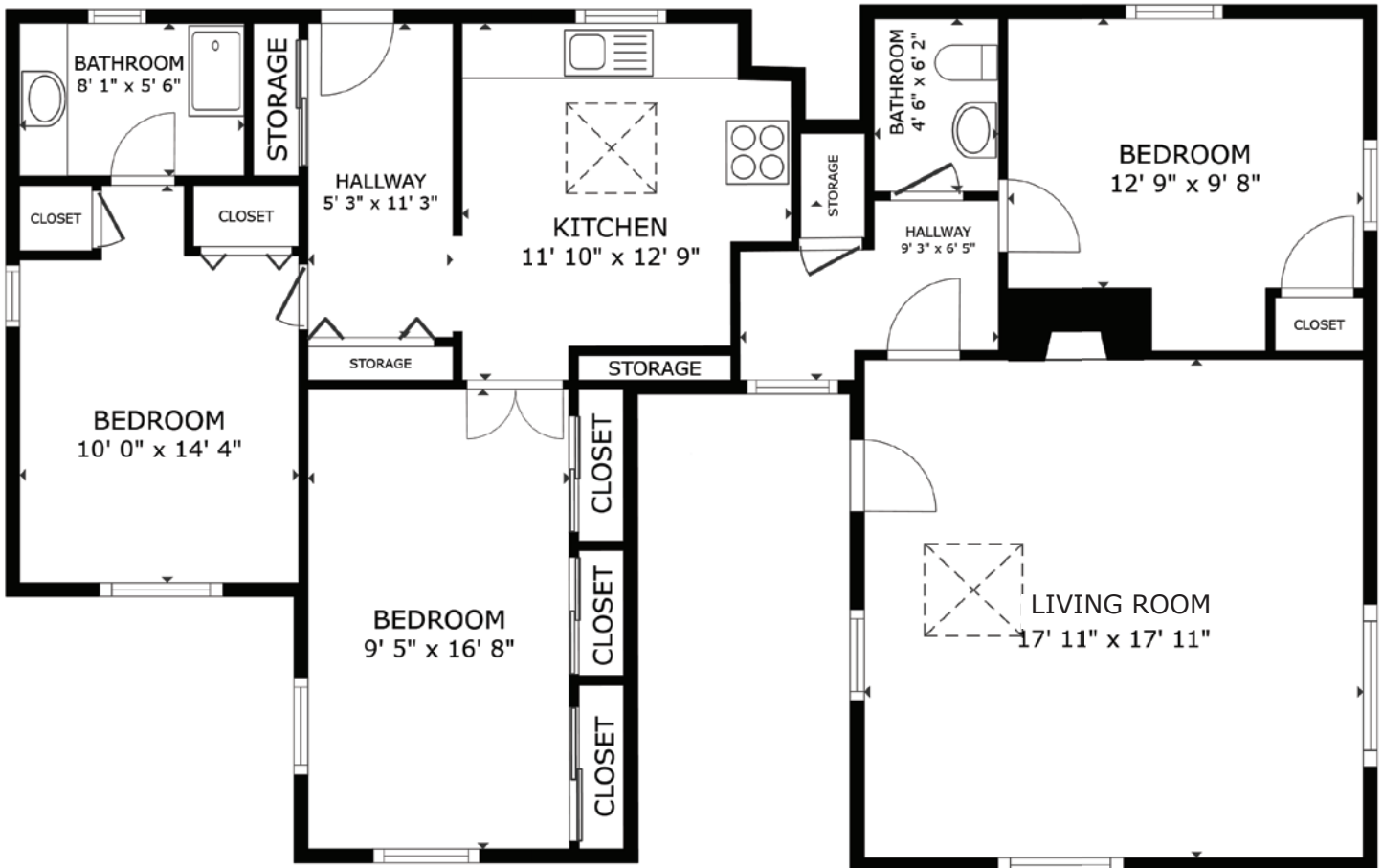


FLOOR PLAN

TORRES 4 NW OF 8TH, CARMEL-BY-THE-SEA



FLOOR PLAN

GROSS INTERNAL AREA
FLOOR PLAN 1,167 sq.ft.
TOTAL : 1,167 sq.ft.
SIZES AND DIMENSIONS ARE APPROXIMATE, ACTUAL MAY VARY.