

1461 LISBON COURT

Pebble Beach



CARMEL REALTY COMPANY
ESTABLISHED 1913

— A Cornerstone in Luxury Real Estate for Over 100 Years —

PROPERTY DETAILS



APPROX LOT SIZE

1.42 acres

PRICE

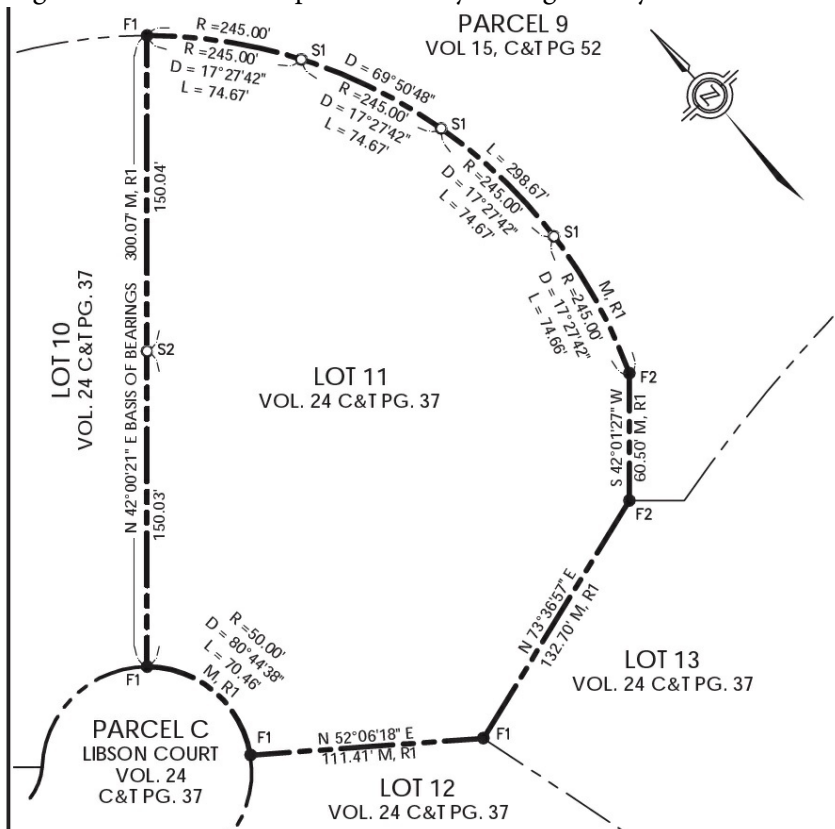
\$1,795,000

WEBSITE

1461LisbonCourt.com

PROPERTY DESCRIPTION

One of the last great Pebble Beach Estate lots available to build your dream home. This 1.42-acre lot offers ample space and is surrounded by mature oak and pine trees providing shade and tranquility with a true Del Monte Forest feel. The ideal location with frontline views of the 4th and 8th fairways and greens of the Poppy Hills Golf Course will entertain you throughout the year. Conveniently located in center Pebble Beach near The Lodge at Pebble Beach, the Pebble Beach Golf Links, Highway One Gate, Carmel-by-the-Sea, multiple restaurants and shops, plus walking and hiking trails. The lot has recently been cleaned and dozens of trees removed for easy viewing. The seller has obtained a survey and the property corners have been staked and marked for easy viewing reference. Construction of a new house next door is resulting in numerous trucks parked nearby during the day - best time to see the property is after 6:00PM or on Sundays.



Square footage, acreage, and other information herein may have been received from a variety of sources and has not been verified. If important to buyers, buyers should conduct their own investigation.

CONTACT INFORMATION

Peter Butler

831.277.7229

Peter@PeterButlerProperties.com

DRE# 01222453

www.PeterButlerProperties.com

www.CARMEIREALTYCOMPANY.COM



CARMEIREALTY COMPANY
ESTABLISHED 1913



Dolores South of Seventh ■ P.O. Drawer C
Carmel-by-the-Sea, California, 93921
Office: 831.622.1000 ■ Fax: 831.624.7338