

1441 RIATA ROAD

Pebble Beach



CARMEL REALTY COMPANY
ESTABLISHED 1913

— A Cornerstone in Luxury Real Estate for Over 100 Years —

PROPERTY DETAILS



APPROX. SQ. FOOTAGE

3,624 sq. ft.

APPROX LOT SIZE

0.78 acres

BEDROOMS

Five

BATHROOMS

Four Full & One Half

PRICE

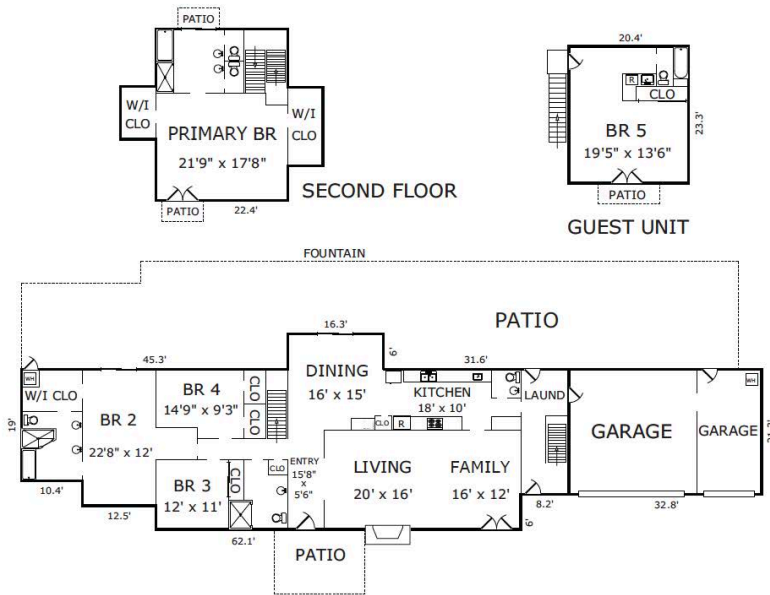
\$5,650,000

WEBSITE

1441RiataRoad.com

PROPERTY DESCRIPTION

Bunya Pine, a gated and private ocean view estate, exudes the effortless, comfortable, casual lifestyle of Pebble Beach. Just moments away from The Lodge and the famous Pebble Beach golf course, this classic French-Country manor features lush landscaping and a grand circular driveway perfect for events and outdoor entertaining. With five bedrooms, four and a half bathrooms, an expansive kitchen, and exquisite gardens, this home offers ample space to relax and enjoy with natural light flowing throughout the home. Easy to maintain and updated, it is perfect for a golf foursome, a second home or full time residence. An elegant estate set on .78 acres in a highly sought-out Pebble Beach location.



AREA CALCULATIONS

First Floor:	2,448sf
Second Floor:	701
Guest Unit:	475
Net Livable Area:	3,624sf
Garage:	699
Patio:	2,070
Patio:	171
Patio:	36
Patio:	2 @ 25

Square footage, acreage, and other information herein may have been received from a variety of sources and has not been verified. If important to buyers, buyers should conduct their own investigation.

CONTACT INFORMATION

Shelly Mitchell Lynch

831.277.8044

Shelly@CarmelRealtyCompany.com

DRE# 01217466

www.mitchellgroup.com

www.CARMEIREALTYCOMPANY.COM



CARMEL REALTY COMPANY
ESTABLISHED 1913



Dolores South of Seventh ■ P.O. Drawer C
Carmel-by-the-Sea, California, 93921
Office: 831.622.1000 ■ Fax: 831.624.7338