

NW CORNER OF CARMELO & 8TH

Carmel-by-the-Sea



CARMEL REALTY COMPANY
ESTABLISHED 1913

— A Cornerstone in Luxury Real Estate for Over 100 Years —

PROPERTY DETAILS



APPROX. SQ. FOOTAGE

2,557 sq. ft.

APPROX LOT SIZE

6,000 sq. ft.

BEDROOMS

Three

BATHROOMS

Three Full & One Half

PRICE

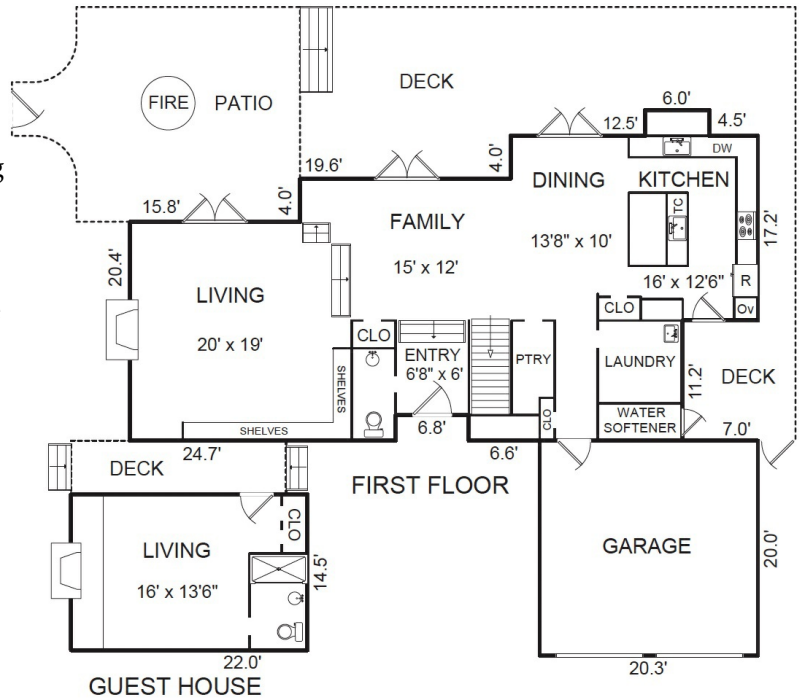
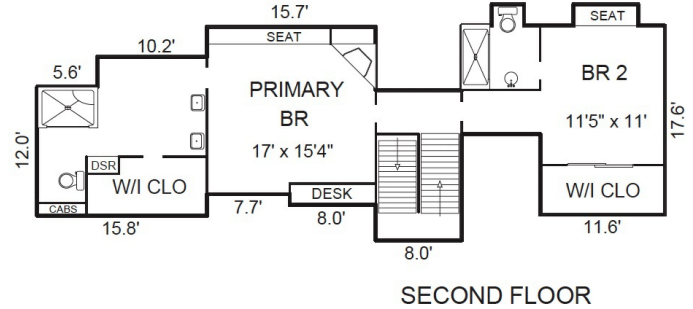
\$7,250,000

WEBSITE

CarmeloAnd8th.com

PROPERTY DESCRIPTION

Location, Location, Location! Perfectly situated at the NW Corner of Carmelo and 8th, this Carmel-by-the-Sea beach house offers the total Carmel experience. With a large, oversized lot and 2,500+ sq ft of meticulously designed living space, this luxurious retreat epitomizes the Carmel lifestyle. Just steps away from the town and beach, enjoy daily strolls on the sand, coffee in town, or fun shopping and dining experiences. The main house boasts 2 bedrooms and 2.5 baths, featuring a chef's kitchen, private west-facing deck, and a rare two-car garage. The primary suite offers a fireplace and spa-like bathroom with ocean views. A spacious back deck and patio with a fire pit create the perfect setting to entertain family and friends or just relax with a good book. Additionally, a separate guest house provides ample guest accommodation with 1 bedroom, 1 bath, an inviting fireplace, and a separate entrance. Experience the allure of coastal living with sophisticated yet relaxed California vibes. Welcome home to the intersection of sophistication and coastal charm at Carmelo and 8th Street.



Square footage, acreage, and other information herein may have been received from a variety of sources and has not been verified. If important to buyers, buyers should conduct their own investigation.

CONTACT INFORMATION

Shelly Mitchell Lynch

831.277.8044

Shelly@CarmelRealtyCompany.com

DRE# 01217466

www.mitchellgroup.com

WWW.CARMELREALTYCOMPANY.COM



CARMEL REALTY COMPANY
ESTABLISHED 1913



Dolores South of Seventh ■ P.O. Drawer C
Carmel-by-the-Sea, California, 93921
Office: 831.622.1000 ■ Fax: 831.624.7338