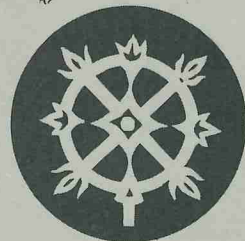


# LAS VILLAS NOGALES

CARMEL VALLEY VILLAGE

HOMES TO COMPLEMENT THE ENVIRONMENT



*STONE, POST & FLOWER*

BOX 511, CARMEL VALLEY, CALIFORNIA, 93924 · TEL. 659-2247



***STONE, POST & FLOWER HOMES***

# *What distinguishes a Stone, Post & Flower Home?*

**WE LISTEN TO THE LAND, AND BUILD WITH ITS GUIDANCE.** Our land development team combines tough engineering know-how with deep respect for the environment. Each Stone, Post & Flower home is fitted naturally into its surroundings, without removing important trees.

**THE WARMTH AND FLEXIBILITY OF OUR DESIGNS.** We have many exciting designs and floor plans which can be adapted to suit your needs. Our design department can also fashion a custom home to fit your site and your family. We can build Stone, Post & Flower homes with or without interior poles.

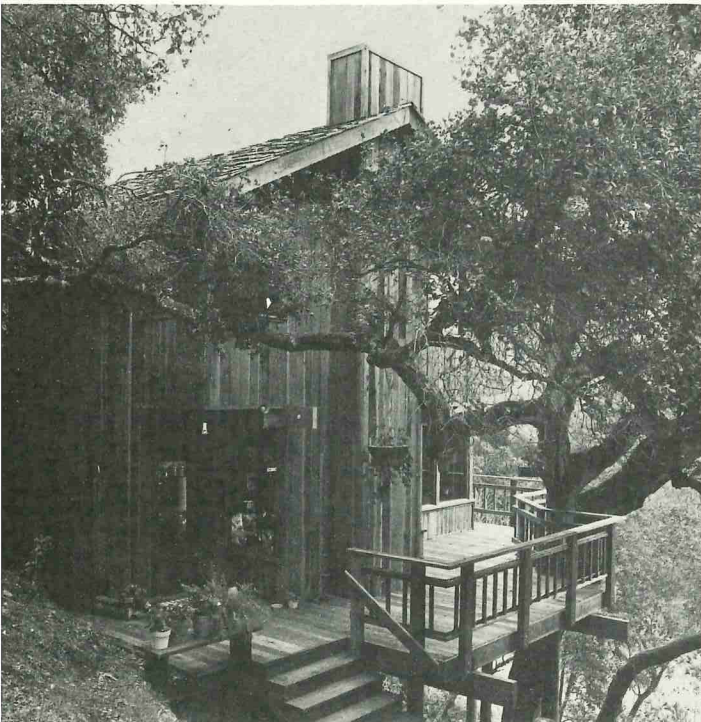
**THE POLE FOUNDATION FOR HILLSIDE HOMES.** In level areas, a Stone, Post & Flower home can be built on a conventional foundation. On hillsides, we use a foundation of chemically pressure-treated poles, embedded in concrete caissons. These carefully engineered pole foundations allow us to build on even the steepest lot without cutting or grading a home-site. Building on pole foundations is one of the most stable, earthquake-resistant methods of construction ever designed. It is also excellent for floodplain and beachfront areas.

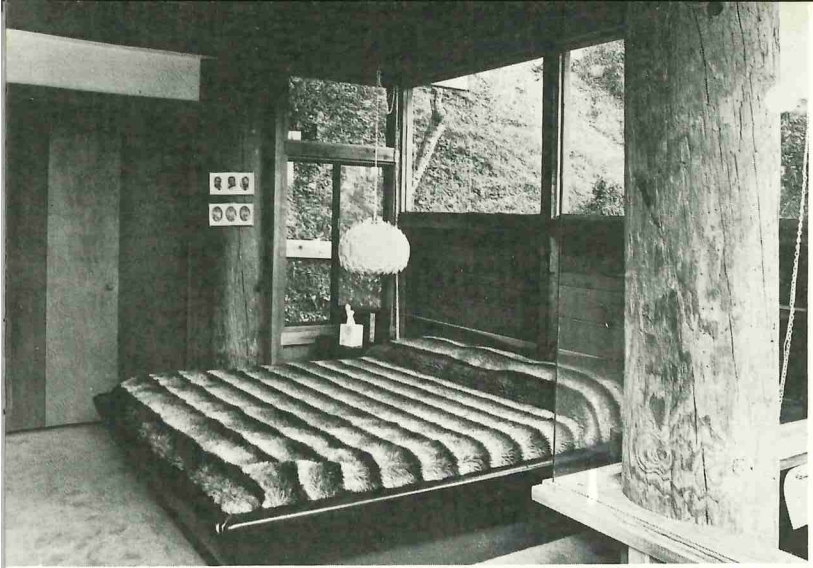
**OUR DEVOTION TO EXCELLENCE.** We build Stone, Post & Flower homes with the craftsmanship and dedication of a brotherhood.

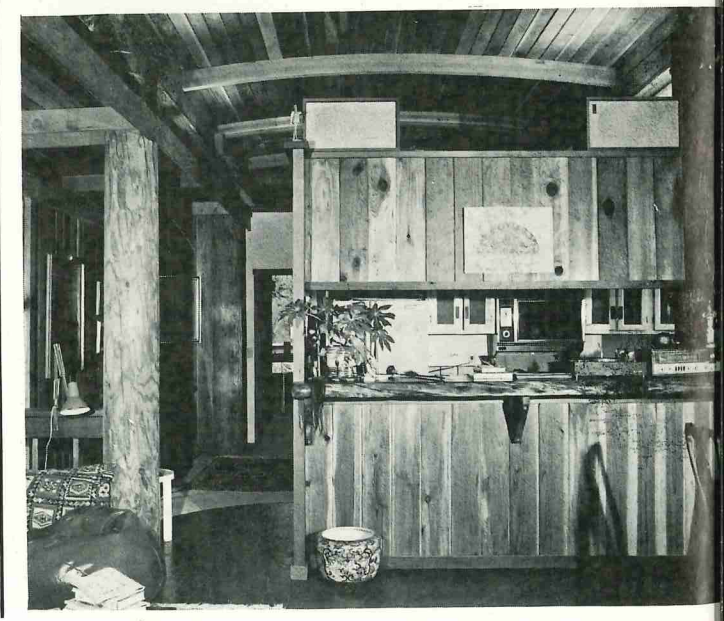
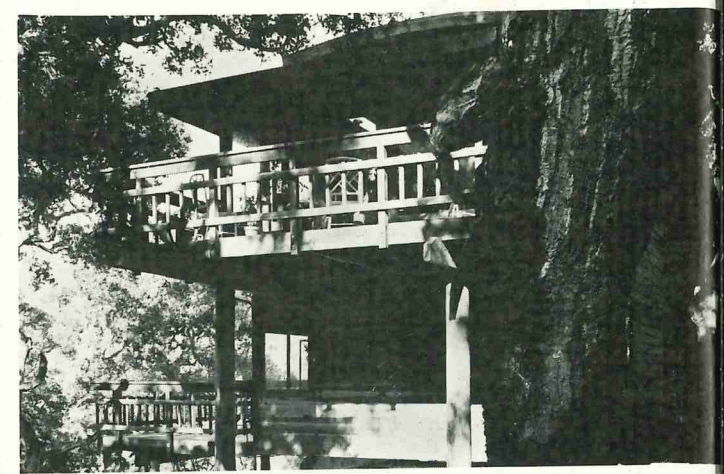
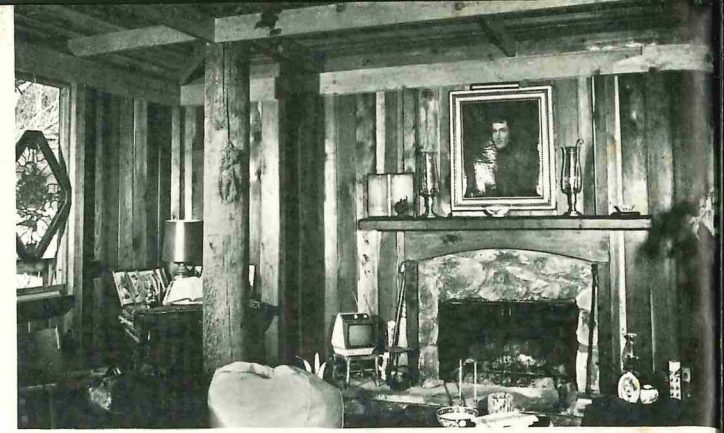
**THE USE OF NATURAL MATERIALS.** There is a warmth in wood, tile and stone which smooths the feelings and lightens the heart. We use these materials to create homes of serene natural elegance.

**EASE OF MAINTENANCE.** Stone, Post & Flower homes have low-maintenance interiors, and natural wood exteriors which will never require paint or stain. This represents a saving of approximately \$35 per month over the entire life of the average house. The treated building poles are protected against insect damage or decay. Much of the natural vegetation is saved, reducing the need for landscaping.

**THEIR VALUE.** Stone, Post & Flower homes represent true value, combining the individuality and quality of an architect-designed home with the efficiency and pricing of a conventional house.

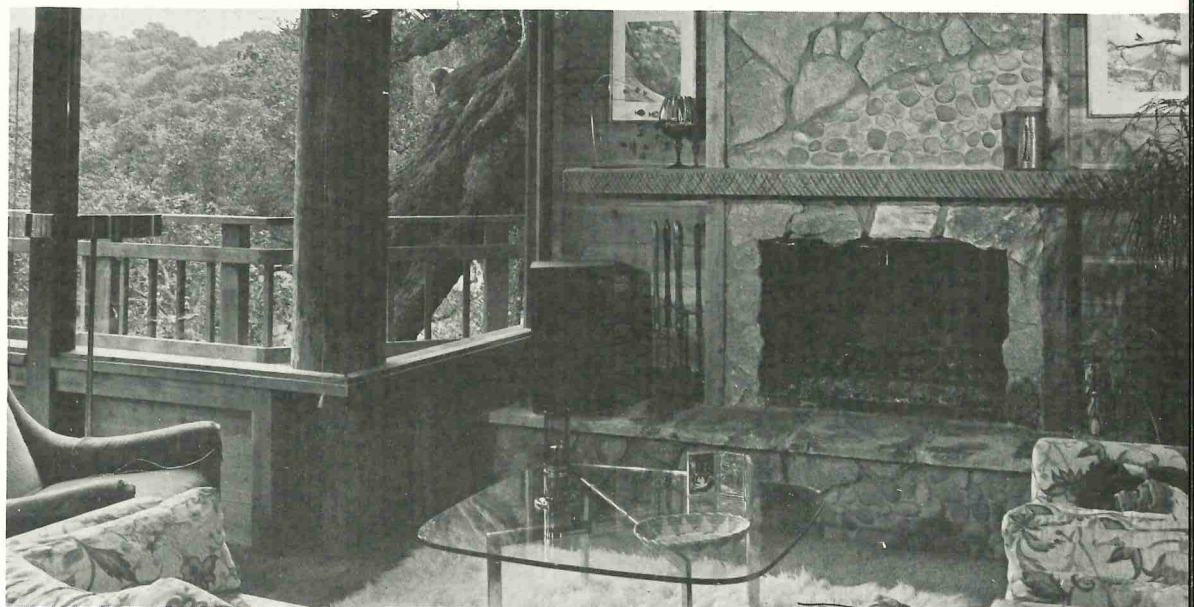
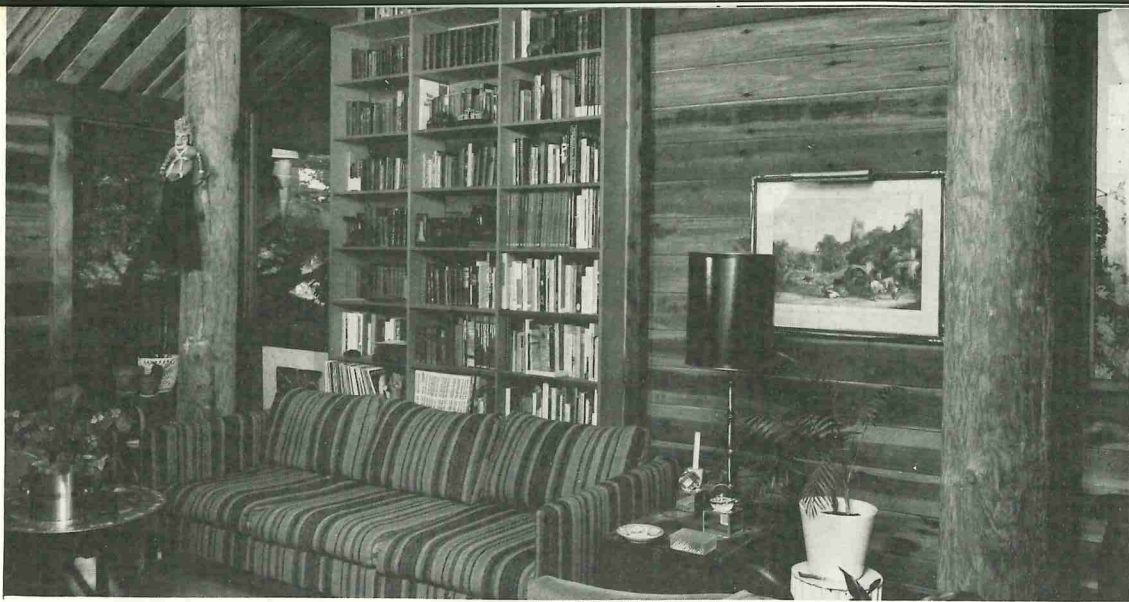
















Photography: George Robinson,  
Chuck Crandall, Larry Crawford.

- A Stone, Post & Flower home can be built for you, on your site or one of ours.
- You may choose from many models and floor plans in a wide price range, or have a home custom designed for your needs. Completed Stone, Post & Flower homes are also available.
- Stone, Post & Flower can design and build commercial buildings and multiple family dwellings of handcrafted, natural elegance.
- We will consider projects anywhere in the continental United States.

Your inquiry is invited.

**STONE, POST & FLOWER** ✪ **KARYA UTAMA, INC.**

(408) 659-2247 ● Box 511, Carmel Valley, California ● 93924

# LAS VILLAS NOGALES

## CARMEL VALLEY VILLAGE

Stone, Post & Flower, offers you a unique opportunity to acquire a home in harmony with its environment, in an exceptionally desirable area.

Four homes and a tennis court, set in a walnut orchard.

Carmel Valley sunshine.  
Valley views.  
Year 'round tennis.

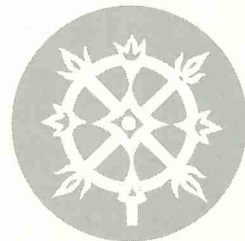
3 bedroom, 2 bath, natural-wood homes.

Two homes still available, from \$72,000.

SUPERB NATURAL  
SETTING

COUNTRY LIVING WITH URBAN CONVENIENCE

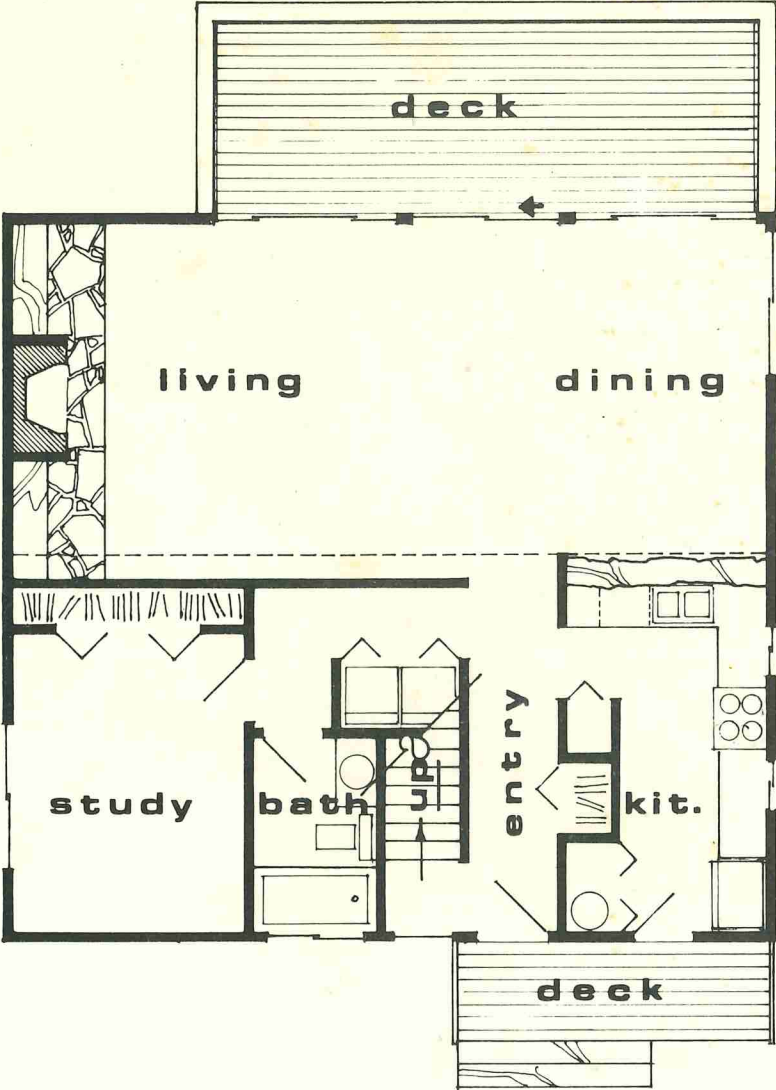
- Las Villas Nogales is a Planned Unit Development of four exciting homes and a tennis court.
- Each home sits on its own lot. Each buyer owns his home, lot, and an interest in the common property and tennis court.
- Landscaping, tennis court and common driveway will be managed by a Homeowners' Association.
- The site is a walnut orchard at Carmel Valley Village, only a short walk to the village center shopping area.
- On the sunny side of the Valley, with views of the north slope.
- Homes 1 and 4 for sale, each with 1472 sq. ft.
- 1 with deck — 4 with patio.
- Homes are 2-story, with redwood siding, cedar shake roofs.
- Balcony overlooking living room. Fireplace with stone hearth.
- Hardwood, parquet floors in living areas.
- Fully insulated, exceeding state code. Gas, forced-air heat.
- Dishwasher and range included.
- The interior walls are redwood and textured plaster.
- Cathedral ceilings with exposed beams.
- Tile counters in kitchens and baths.
- Redwood slab bar, 8 feet long.
- Living/dining area 15x32 feet.
- Architect-designed homes. Buyer may choose tile, carpet colors, and lighting, until January 15, 1976.



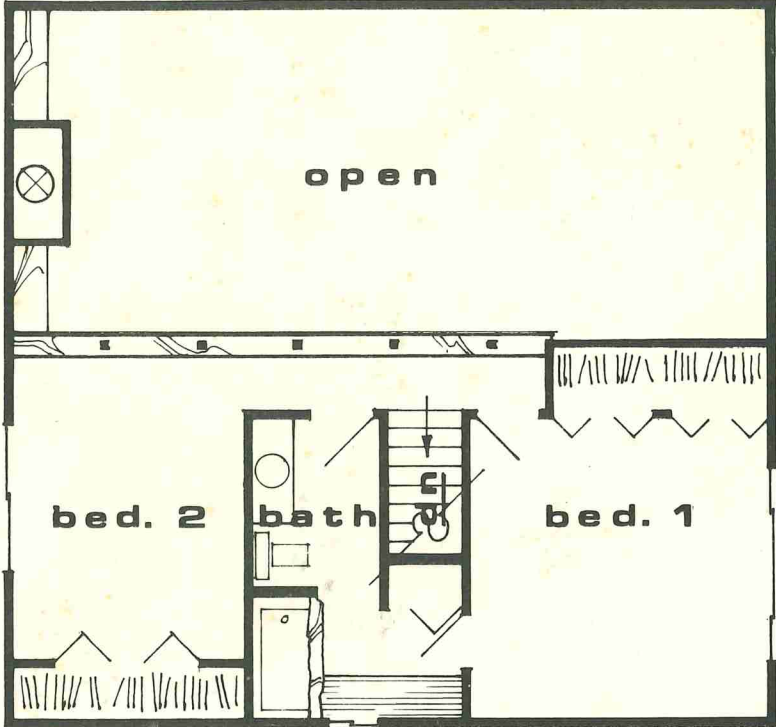
*STONE, POST & FLOWER*

BOX 511, CARMEL VALLEY, CALIFORNIA, 93924 · TEL. 659-2247

FLOOR PLANS FOR BOTH HOMES.



lower level



upper level

