
478 CORRAL DE TIERRA ROAD, SALINAS

Approximately 3,786 Sq. Ft. ■ 4 Bedrooms, 2.5 Baths ■ 10.09 Acre Lot

2022 Updates

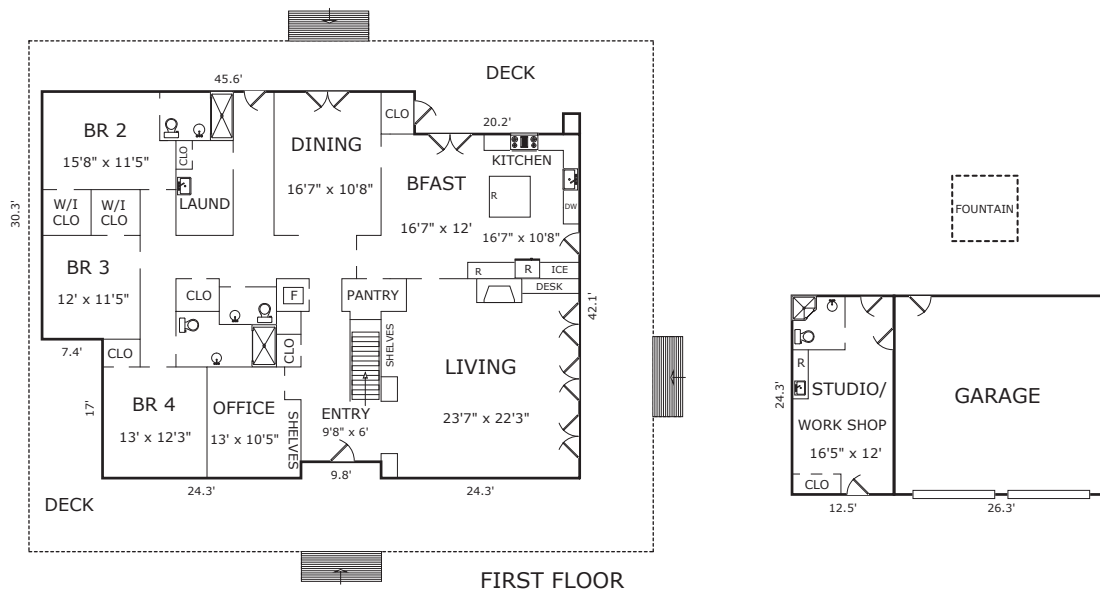
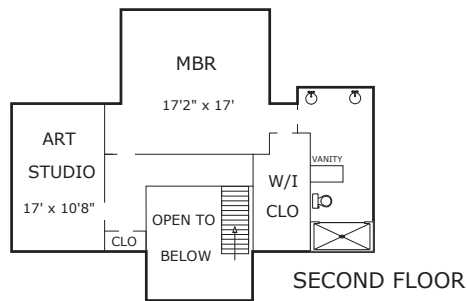
- Added a new tankless water heater and premier house filtration system
- Trenched to bring high speed internet to the home. Wired CAT 8 throughout
- Added in wall ceiling porch and theater speakers
- Added wireless lighting switches for automation
- Painted interior house including bathrooms and kitchen cabinets
- Redid the front and side yard landscaping
- Added premier Master closet shelving, drawers system
- Repaired windows, replaced jambs and screens
- Added electric to yard including low voltage lighting, to chicken coop and shed
- Guest house is 75% complete on permitting for a new 1600 square foot guest house ADU w/wrap around porch
- Revived 50+ fruit trees in orchard and repaired irrigation
- Upgraded lighting fixture including new hall chandelier

2020 Updates

- Generator by Generac
- Fully automatic electric gate at driveway
- Sprinkler system and drip in garden
- Horse upgrades including: Hot wired pasture fencing, new gates, automatic water troughs, commercial hay feeders, concrete cross tie area for grooming
- Bryant dual zone heater and air-conditioner
- New duct work throughout the house
- Rodent proofing the house
- New Washer and Dryer
- Window treatments upstairs
- ADT alarm system with exterior cameras

2018/2019 Updates

- Plastered interior with special sealant/protectant
- Updated kitchen with new appliances, counters, cabinets, tile, farmhouse sink, reverse osmosis drinking system, walnut island. Did not replace range.
- High end "School House Electric" lighting throughout house
- New interior and exterior door handles, brackets, hinges
- Walnut wood shelves and features throughout house
- Updated bathrooms; flooring and fixtures, including Duravit sinks
- Built in Queen bunk beds in kids' room
- New fireplace façade with floating walnut mantel
- Aged Farmhouse wide plank redwood flooring
- "Newport Brass" Live Antique brass fixtures throughout house
- Interior Transom Windows
- Shiplap Interior siding throughout house
- Reading nook under the stairs
- Pantry lined with Redwood
- Planted over 300 fruit trees and drip line irrigation
- New Barn
- Raised Vegetable Beds
- Planted sod
- Vintage Window "She-Shed" or Greenhouse
- Custom Chicken Coop
- Fully fenced kids play ground area; in ground trampoline, swing set, zipline
- Grapevines
- Beehives
- Exterior Painting
- Driveway paved
- Hay Shed
- Compost Bins



Square footage, acreage, and other information herein has been received from one or more of a variety of sources. Such information has not been verified. If important to buyers, buyers should conduct their own investigation.