

14390 MOUNTAIN QUAIL ROAD

Salinas



CARMEL REALTY COMPANY
ESTABLISHED 1913

— A Cornerstone in Luxury Real Estate for Over 100 Years —

PROPERTY DETAILS



APPROX. SQ. FOOTAGE

2,867 sq. ft.

BEDROOMS

Four

PRICE

\$1,395,000

APPROX LOT SIZE

5,964 sq. ft.

BATHROOMS

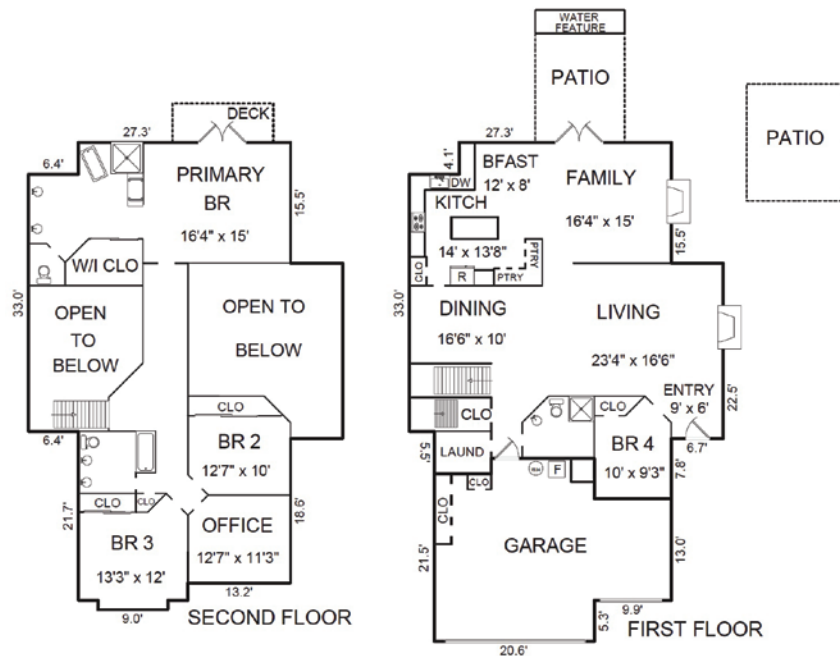
Three

WEBSITE

14390MountainQuail.com

PROPERTY DESCRIPTION

Come experience sunbelt living in The Meadows of Corral de Tierra! With lovely grounds, pool, clubhouse, activity courts and walking trails, this charming area offers so much! Updated in 2022, this 4 bedroom, 3 bath, 2867 sq ft 2-story home is light-filled due to its many windows and high ceilings. Spacious due to a great floor plan with one bedroom and full bath downstairs, plus 3 bedrooms, 2 full baths and a flex room upstairs. The updated kitchen with island, stainless appliances and loads of cabinets and storage opens to an inviting family room, complete with one of three fireplaces. The primary bathroom is resort-inspired with its stand-alone tub, beautiful tile shower and walk-in closet. Relax on the primary balcony overlooking the hills or in the backyard with its fountain and patio areas, perfect for reading or entertaining. A large 2.5 car garage with oodles of built-in storage cabinets and shelves meets all sorts of needs. First time for sale since 1994, this move-in ready home is awaiting its new owner!



Square footage, acreage, and other information herein may have been received from a variety of sources and has not been verified. If important to buyers, buyers should conduct their own investigation.

CONTACT INFORMATION

Rebecca Wolf Arnold

831.241.2600

Rebecca@CarmelRealtyCompany.com

DRE#01706104

Geoff Arnold

831.297.3890

Geoff@CarmelRealtyCompany.com

DRE#02036451

Danielle Germain

Monterey Coast Realty

303.502.6477

Danielle@MontereyCoastRealty.com

DRE#02154598

WWW.CARMEALREALTYCOMPANY.COM



CARMEL REALTY COMPANY
ESTABLISHED 1913



Dolores South of Seventh ■ P.O. Drawer C
Carmel-by-the-Sea, California, 93921
Office: 831.622.1000 ■ Fax: 831.624.7338