

3908 RONDA ROAD

Pebble Beach



CARMEL REALTY COMPANY
ESTABLISHED 1913

— A Cornerstone in Luxury Real Estate for Over 100 Years —

PROPERTY DETAILS



APPROX. SQ. FOOTAGE

7,113 sq. ft.

APPROX LOT SIZE

.92 acres

BEDROOMS

Five

BATHROOMS

Five Full & One Half

PRICE

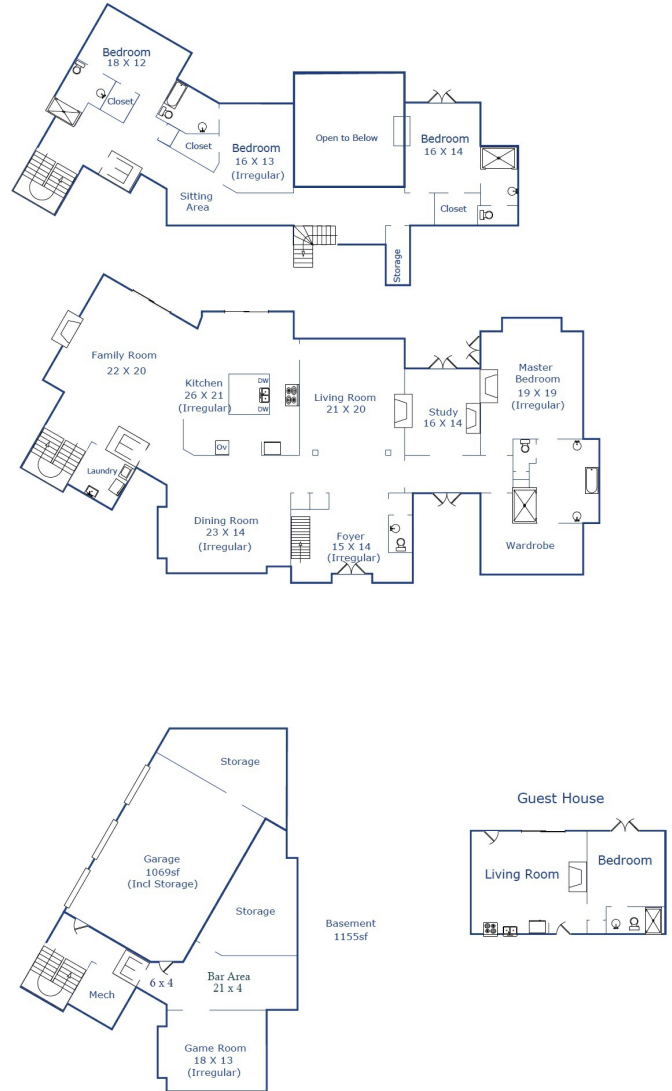
\$14,800,000

WEBSITE

PebbleBeachPerfection.com

PROPERTY DESCRIPTION

Capturing the essence of indoor-outdoor living, this European inspired estate in the heart of Pebble Beach offers a stylish and sophisticated residence coupled with iconic views of Stillwater Cove and Point Lobos. The newly built home boasts an expansive primary suite with an office area and spa inspired bath, three additional bedroom suites, 4 1/2 baths, formal living and dining rooms, an epicurean kitchen with adjoining family room and a newly renovated lower level game room or media room with bar area. Inviting outdoor terraces and patios feature an ocean view fire pit and a well-appointed outdoor cooking area; beyond the thoughtful stonework and extensive landscaping is a separate one bedroom/one bath guesthouse with living room and kitchen. Enjoy impressive sunset views over treetops to the Pacific Ocean and beyond, while the forested setting offers ultimate privacy. This elegant setting near The Lodge provides ease of access to golf, restaurants, The Spa, the Beach & Tennis Club and Carmel. Designed with the utmost attention to detail, all finishes were carefully sourced and selected culminating in a masterful build.



Square footage, acreage, and other information herein may have been received from a variety of sources and has not been verified. If important to buyers, buyers should conduct their own investigation.

CONTACT INFORMATION

Chris Pryor

831.229.1124

Chris@CarmelRealtyCompany.com

DRE# 01750627

www.ChrisPryorProperties.com

WWW.CARMELREALTYCOMPANY.COM



CARMEL REALTY COMPANY
ESTABLISHED 1913



Dolores South of Seventh ■ P.O. Drawer C
Carmel-by-the-Sea, California, 93921
Office: 831.622.1000 ■ Fax: 831.624.7338