

308 BISHOP AVENUE

Pacific Grove



CARMEL REALTY COMPANY
ESTABLISHED 1913

— A Cornerstone in Luxury Real Estate for Over 100 Years —

PROPERTY DETAILS



APPROX. SQ. FOOTAGE

2,325 sq. ft.

BEDROOMS

Four

PRICE

\$1,695,000

APPROX LOT SIZE

5,900 sq. ft.

BATHROOMS

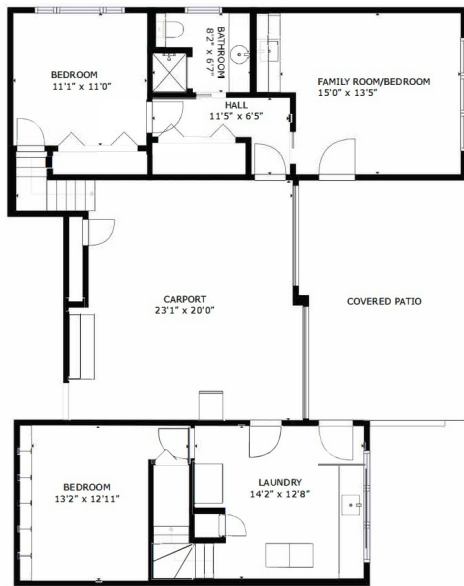
Two

WEBSITE

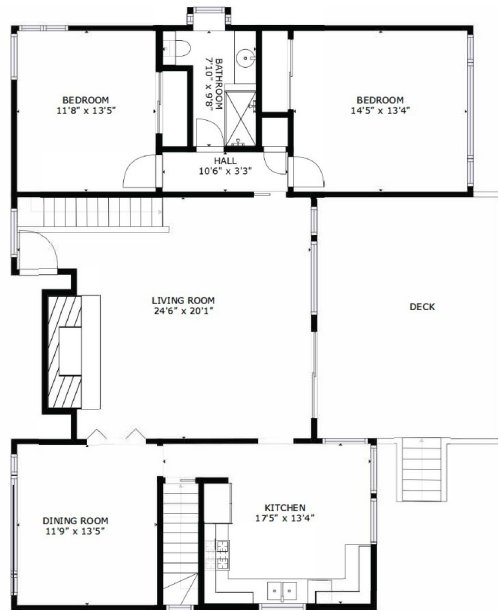
308Bishop.com

PROPERTY DESCRIPTION

Prominent mature property sited at the top of Bishop Avenue, a destination only street in Pacific Grove, with commanding unobstructed ocean and Bay views, is this 2,325 sq ft, 4 bedroom immaculate & turnkey home, offered for the first time since 1995 at \$1,695,000. Large 5,900 sq ft corner lot fully fenced with mature landscape, huge ocean view balcony deck, with two car garage, two vehicle carport creating combined parking behind the remote security gate for 6-8 vehicles.



LOWER LEVEL



MAIN LEVEL

Square footage, acreage, and other information herein may have been received from a variety of sources and has not been verified. If important to buyers, buyers should conduct their own investigation.

CONTACT INFORMATION

Paul Brocchini

831.601.1620

PaulB@CarmelRealtyCompany.com

DRE# 00904451

Mark Ryan

831.238.1498

MarkRyan@CarmelRealtyCompany.com

DRE# 01458945

WWW.CARMELREALTYCOMPANY.COM



CARMEL REALTY COMPANY
ESTABLISHED 1913



Dolores South of Seventh ■ P.O. Drawer C
Carmel-by-the-Sea, California, 93921
Office: 831.622.1000 ■ Fax: 831.624.7338