

1023 RODEO ROAD

Pebble Beach



CARMEL REALTY COMPANY
ESTABLISHED 1913

— A Cornerstone in Luxury Real Estate for Over 100 Years —

PROPERTY DETAILS



APPROX. SQ. FOOTAGE

4,373 sq. ft.

BEDROOMS

Three

PRICE

\$4,950,000

APPROX LOT SIZE

10,000 sq. ft.

BATHROOMS

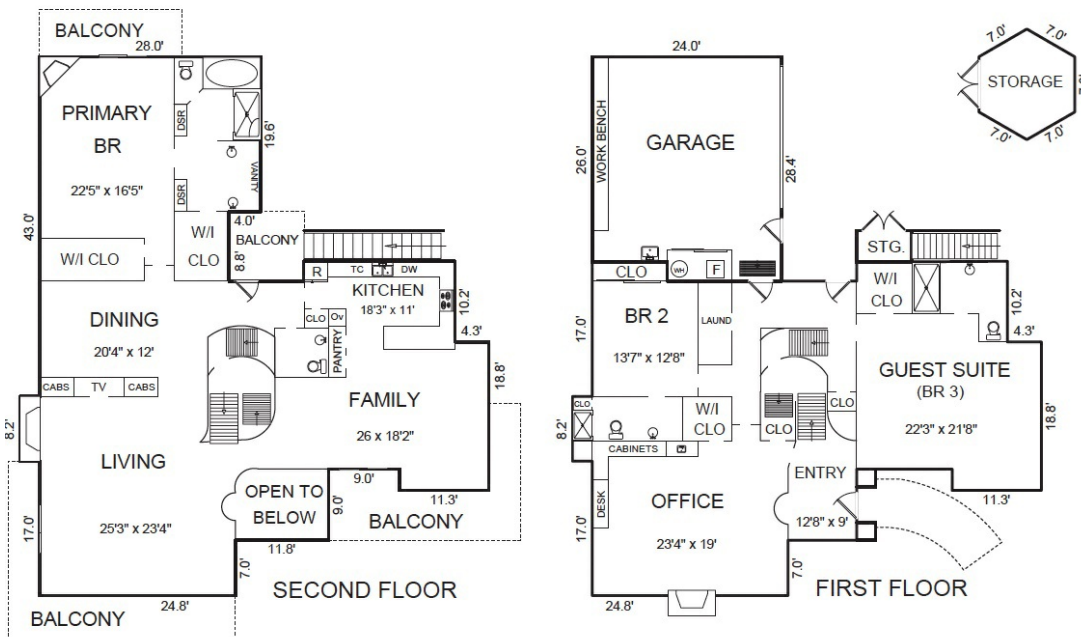
Three Full & One Half

WEBSITE

1023Rodeo.com

PROPERTY DESCRIPTION

In a prime Country Club West location, a short distance to seaside paths, MPCC Main Clubhouse & MPCC Shore Course, one of the host locations of the AT&T Pro-AM. Filled with natural light, this reverse floor plan is well suited to capture expansive sunset, golf course, & ocean views. The upper level features a grand open living room including kitchen, dining & living areas with fireplace, vaulted ceilings & floor to ceiling windows. Two large balconies are perfect for dining & entertaining while watching crashing waves, golfers & sunsets. The upstairs primary bedroom offers a cozy sitting area fireplace, balcony overlooking the greenbelt, two walk-in closets & a spacious ensuite bathroom with white marble. Large family room/den, two ensuite bedrooms, & an oversized two-car garage with room for a golf cart occupy the main floor. This house is much bigger than what could be built today under current FAR limitations on this 10,000 sf corner lot with greenbelt behind for added privacy & gated circular driveway.



Square footage, acreage, and other information herein may have been received from a variety of sources and has not been verified. If important to buyers, buyers should conduct their own investigation.

CONTACT INFORMATION

Peter Butler

831.277.7229

Peter@PeterButlerProperties.com

DRE# 01222453

www.PeterButlerProperties.com

www.CARMEIREALTYCOMPANY.COM



CARMEIREALTY COMPANY
ESTABLISHED 1913



Dolores South of Seventh ■ P.O. Drawer C
Carmel-by-the-Sea, California, 93921
Office: 831.622.1000 ■ Fax: 831.624.7338