

MONTE VERDE 3NE OF 9TH

Carmel-by-the-Sea



CARMEL REALTY COMPANY
ESTABLISHED 1913

— A Cornerstone in Luxury Real Estate for Over 100 Years —

PROPERTY DETAILS



APPROX. SQ. FOOTAGE

2,207 sq. ft.

BEDROOMS

Three

PRICE

\$4,850,000

APPROX. LOT SIZE

6,000 sq. ft.

BATHROOMS

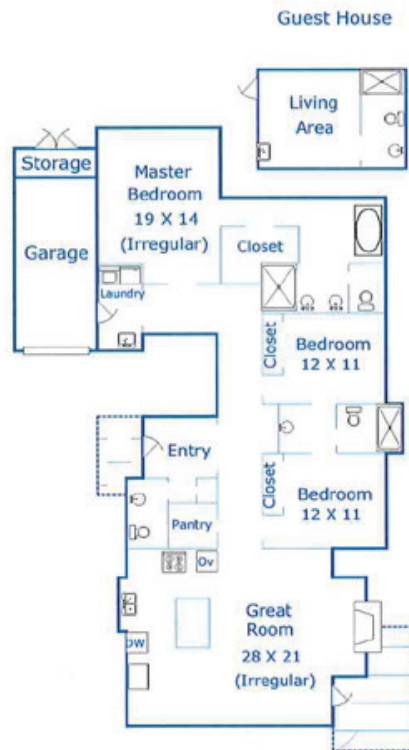
Three Full & One Half

WEBSITE

MonteVerde3NE9th.com

PROPERTY DESCRIPTION

Experience this beautiful craftsman home in the coveted Carmel Golden Rectangle. Designed by Jun Sillano IDG and built by Harlan Bradley, Masterwork, the historic house has been transformed into a new residence with 1987 sf main house and 220 sf guest cottage. On an oversized 6,000 sq.ft. lot, this unique single-level home embraces indoor-outdoor living. The stunning great room with soaring ceilings is the preservation of old-world charm with modern-contemporary flairs. An inviting foyer, a master suite, two guest bedrooms rooms with a Jack and Jill bathroom, and a powder room in the main house are all newly built. Top of the line quality throughout includes chef's kitchen with Miele appliances, marble countertops and island, and vaulted ceilings. The guest cottage has a bar sink and full bathroom, ideal for visitors or working from home. Walk to the fabulous Carmel Beach and/or the Ocean Ave commercial area is only 3 blocks away. This is what the Carmel life-style is all about!



Square footage, acreage, and other information herein may have been received from a variety of sources and has not been verified. If important to buyers, buyers should conduct their own investigation.

CONTACT INFORMATION

Greg Kraft

831.521.0009

Greg@CarmelRealtyCompany.com

CalDRE#00618994

WWW.GREGKRAFT.COM

WWW.CARMELREALTYCOMPANY.COM



CARMEL REALTY COMPANY
ESTABLISHED 1913



Dolores South of Seventh ■ P.O. Drawer C
Carmel-by-the-Sea, California, 93921
Office: 831.622.1000 ■ Fax: 831.624.7338