

7068 VALLEY GREENS CIRCLE

Carmel



CARMEL REALTY COMPANY
ESTABLISHED 1913

— A Cornerstone in Luxury Real Estate for Over 100 Years —

PROPERTY DETAILS



APPROX. SQ. FOOTAGE

2,037 sq. ft.

APPROX LOT SIZE

10,952 sq. ft.

BEDROOMS

Two

BATHROOMS

Two Full & One Half

PRICE

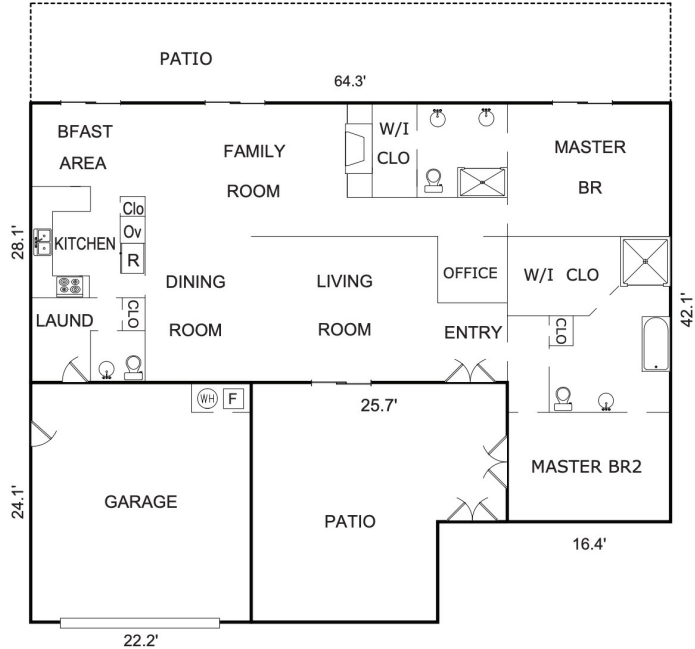
\$2,100,000

WEBSITE

7068ValleyGreensCircle.com

PROPERTY DESCRIPTION

Located on a quiet street in the highly coveted and desirable Quail Lodge area, this clean and bright single story home features 2 primary suites and 2.5 baths. Gracious and comfortable indoor areas include a living room, dining room, breakfast nook and sitting room, office area and attached 2-car garage. Relax in the peaceful front courtyard around the outdoor fireplace with views of the Santa Lucia Mountain Range or soak up the Carmel Valley sunshine on the large back patio in the fully landscaped backyard. Elegant touches throughout include skylights, walk-in closets with built-in closet organizers, Travertine tiled bathrooms and kitchen, stainless steel kitchen appliances, gorgeous, stacked stone fireplace in the sitting room and an oversized soaking tub in one of the primary suites. Tranquil, relaxing and move-in ready, this one easily beckons its next lucky owner!



ROOM DIMENSIONS

Entry:	8' x 6'7"
Kitchen:	11' x 11'
Bfast Area:	11' x 8'
Dining Room:	14'4" x 10'
Living Room:	19'4" x 14'4"
Office:	7' x 6'5"
Family Room:	20'4" x 12'9"
Master BR:	15'6" x 12'8"
Master BR2:	15'7" x 10'9"

AREA CALCULATIONS

First Floor:	2,037sf
Net Livable Area:	2,037sf
Patio:	643
Enclosed Patio:	550
Garage:	534

Square footage, acreage, and other information herein may have been received from a variety of sources and has not been verified. If important to buyers, buyers should conduct their own investigation.

CONTACT INFORMATION

Rebecca Wolf Arnold

831.241.2600

Rebecca@CarmelRealtyCompany.com

DRE# 01706104

Geoff Arnold

831.297.3890

Geoff@CarmelRealtyCompany.com

DRE# 02036451

WWW.CARMEALREALTYCOMPANY.COM



CARMEAL REALTY COMPANY
ESTABLISHED 1913



Dolores South of Seventh ■ P.O. Drawer C
Carmel-by-the-Sea, California, 93921
Office: 831.622.1000 ■ Fax: 831.624.7338