

316 PASADERA COURT

Monterey



CARMEL REALTY COMPANY
ESTABLISHED 1913

— A Cornerstone in Luxury Real Estate for Over 100 Years —

PROPERTY DETAILS



APPROX. SQ. FOOTAGE

4,437 sq. ft.

BEDROOMS

Five

PRICE

\$3,200,000

APPROX. LOT SIZE

0.68 Acres.

BATHROOMS

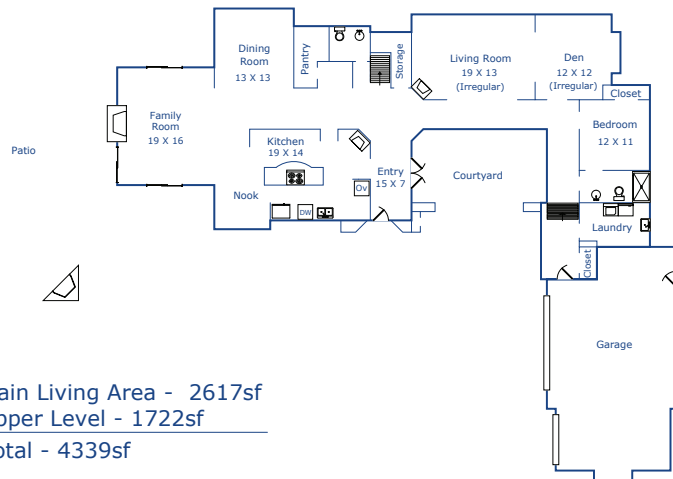
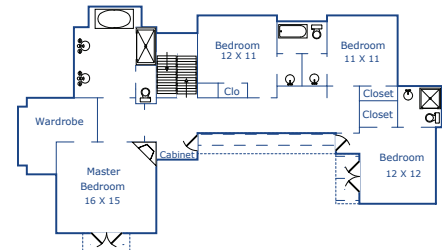
Four & One Half

WEBSITE

316PasaderaCourt.com

PROPERTY DESCRIPTION

This magnificent Custom Spanish Hacienda offers gracious resort living within the gates of Pasadera. Expertly and beautifully designed by James Smith, AIA, known for his iconic Monterey Peninsula estates, breathtaking, sweeping views from Mt. Toro to Bay Ridge captivate day and night. Enter the foyer where artisan-made custom wrought iron chandeliers, handmade sconces, decorative handmade Orvieto pendant lights and colorful Talavera stair tiles immediately catch ones attention. Vaulted beamed ceilings, decorative wood columns, wrought iron railings and custom, arched solid wood doors enrich the incredible quality of this home. A gourmet Kitchen with Jerusalem limestone-topped island opens to an airy family room and intimate dining room while archways lead to the living room with its own custom fireplace, one of five fireplaces. Part open floor plan, part intimate spaces, with amazing privacy inside and out, this turn-key estate is Pasadera at its best!



Main Living Area - 2617sf
 Upper Level - 1722sf
 Total - 4339sf
 Garage - 776sf

Square footage, acreage, and other information herein may have been received from a variety of sources and has not been verified. If important to buyers, buyers should conduct their own investigation.

CONTACT INFORMATION

Rebecca Wolf Arnold

831.241.2600

Rebecca@CarmelRealtyCompany.com

DRE#01706104

Geoff Arnold

831.297.3890

Geoff@CarmelRealtyCompany.com

DRE#02036451

WWW.CARMELREALTYCOMPANY.COM



CARMEL REALTY COMPANY
 ESTABLISHED 1913



Dolores South of Seventh ■ P.O. Drawer C
 Carmel-by-the-Sea, California, 93921
 Office: 831.622.1000 ■ Fax: 831.624.7338