

*3470 Edgefield Place*  
Carmel



**CARMEL REALTY COMPANY**  
ESTABLISHED 1913

A CORNERSTONE IN LUXURY REAL ESTATE FOR OVER 100 YEARS

PROPERTY DETAILS

APPROX. SQ. FOOTAGE

2,472 sq. ft.

APPROX. LOT SIZE

9,148 sq. ft.

BEDROOMS

Four

BATHROOMS

Two Full & One Half

PRICE

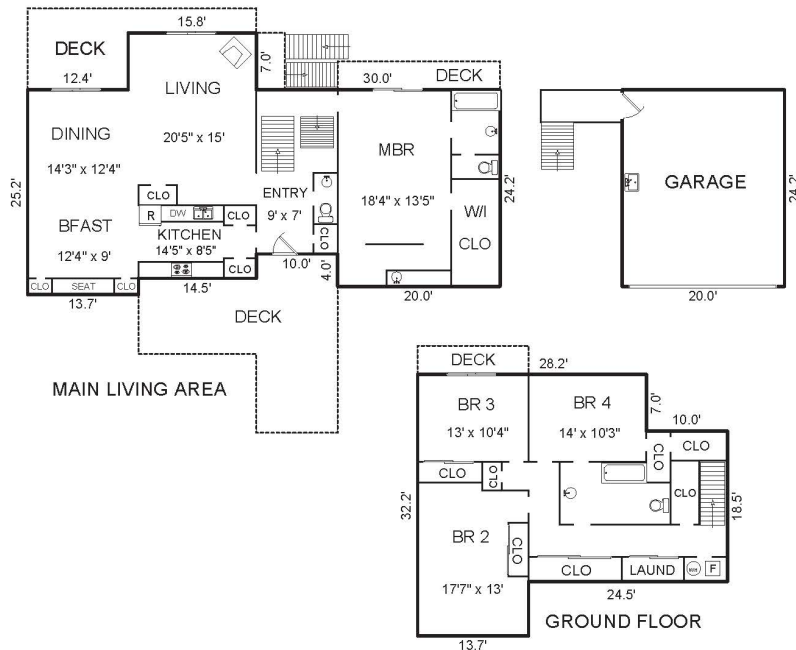
\$1,499,000

WEBSITE

www.3470Edgefield.com

DESCRIPTION

Located on the southside of Edgefield Place looking westward over a lush forest of treetops, sits this light-splashed home. Ideally located in Carmel's High Meadows, it has vaulted ceilings, sky lights, clerestory windows and abundant south-facing windows and sliding glass doors that brighten the house from top to bottom. In the 2,400+ sq. ft. of living space are four bedrooms, 2 full baths, a well-located powder room and a huge two-car garage. Welcoming Saltillo tile entry. Tile continues into kitchen and breakfast areas. Large living room with sliding doors to deck, a pass-through to the kitchen and a wood-burning Franklin Stove sitting on a stone hearth. Large master bedroom has, in addition to the master bath, a separate dressing area with a lengthy, tiled dressing table with sink. Sliding glass door opens to a deck. Lots of storage and a basement area with living potential.



Square footage, acreage, and other information herein may have been received from a variety of sources and has not been verified. If important to buyers, buyers should conduct their own investigation.

CONTACT INFORMATION

Paul Brocchini

831.601.1620

PaulB@CarmelRealtyCompany.com

DRE# 00904451

Mark Ryan

831.238.1498

MarkRyan@CarmelRealtyCompany.com

DRE# 01458945



CARMEL REALTY COMPANY  
ESTABLISHED 1913



Dolores South of Seventh · PO Drawer C  
Carmel-by-the-Sea, California 93921  
Office: 831.622.1000 · Fax: 831.624.7338