

*1552 Riata Road*  
Pebble Beach



**CARMEL REALTY COMPANY**  
ESTABLISHED 1913

A CORNERSTONE IN LUXURY REAL ESTATE FOR OVER 100 YEARS

PROPERTY DETAILS

APPROX. SQ. FOOTAGE

3,888 sq. ft.

APPROX. LOT SIZE

1.896 acres

BEDROOMS

Three

BATHROOMS

Three Full & One Half

PRICE

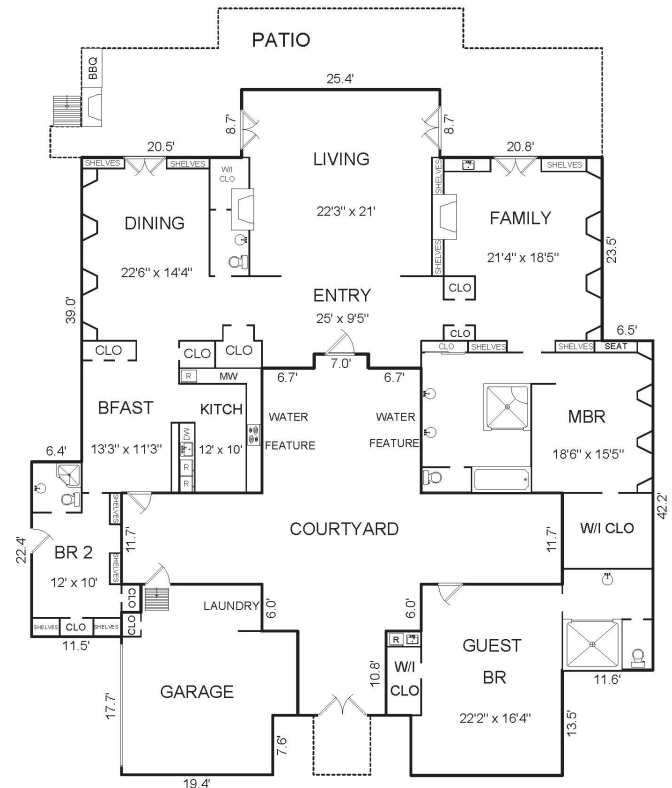
\$4,600,000

WEBSITE

www.1552RiataRd.com

DESCRIPTION

Tucked away in a private and spectacular park like setting this central Pebble Beach estate will delight the most discerning tastes. The home conveys the essence of unpretentious elegance and simplicity of design that is both aesthetic and calming. This chic modern classic design boasts beautiful ocean views in the garden setting with water features and walls of glass which pull nature in. Relax on the back patio with a roaring fire or enjoy a morning coffee in the sunny protected courtyard, this home lives the way you do. Single level, 3 bedrooms, 3.5 baths, including separate but attached guest quarters with its own entrance. Close to the Lodge, golf, tennis, spa and restaurants - this is a perfect Pebble Beach spot.



Square footage, acreage, and other information herein may have been received from a variety of sources and has not been verified. If important to buyers, buyers should conduct their own investigation.

CONTACT INFORMATION

Greg Kraft

831.521.0009

Greg@CarmelRealtyCompany.com

DRE# 00618994

Shelly Mitchell Lynch

831.277.8044

Shelly@CarmelRealtyCompany.com

DRE# 01217466



CARMEL REALTY COMPANY  
ESTABLISHED 1913



Dolores South of Seventh · PO Drawer C  
Carmel-by-the-Sea, California 93921  
Office: 831.622.1000 · Fax: 831.624.7338