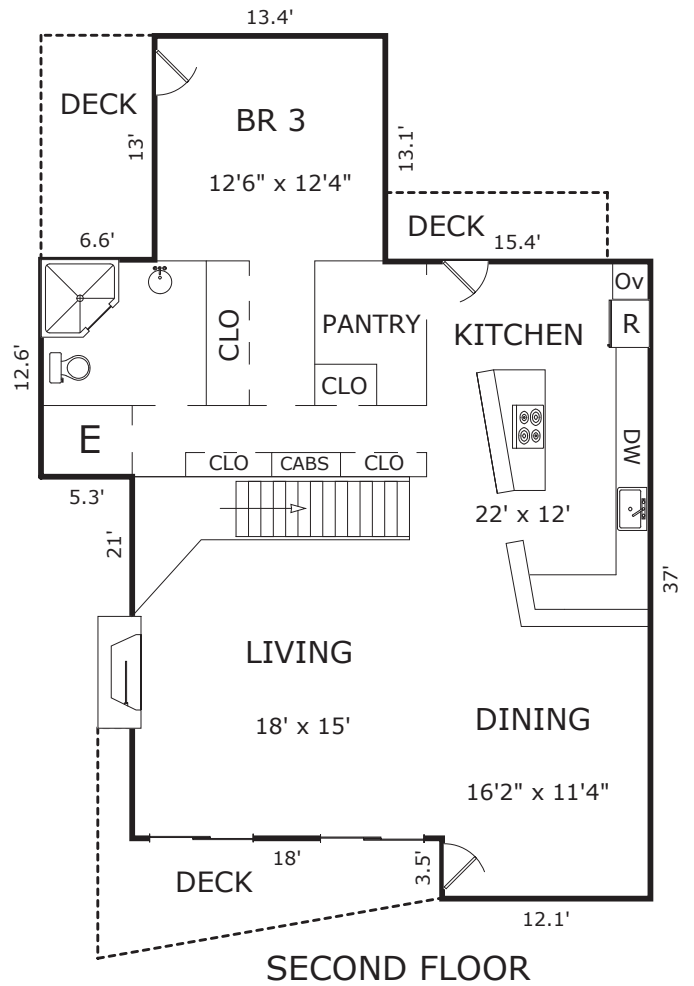
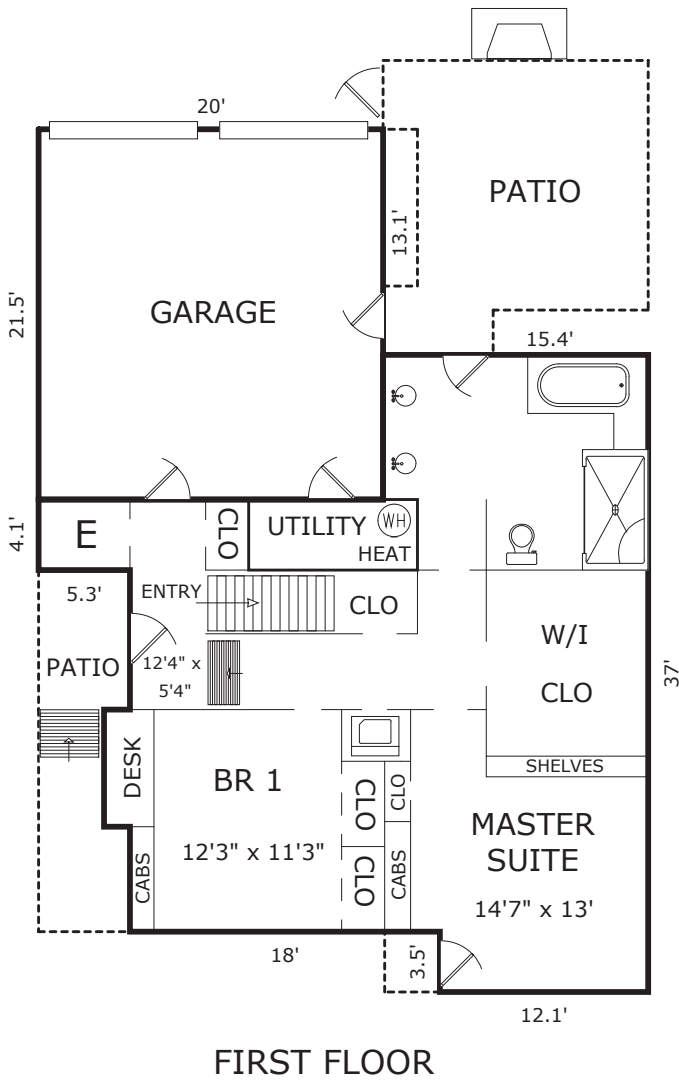


# 731 OCEAN VIEW BLVD., PACIFIC GROVE, CA 93950



## AREA CALCULATIONS (approximate)

First Floor:	919sf
Second Floor:	<u>1,203</u>
Net Livable Area:	2,122sf

Garage:	430
Utility:	40
Patio:	221
Patio:	101
Deck:	118
Deck:	86
Deck:	52