

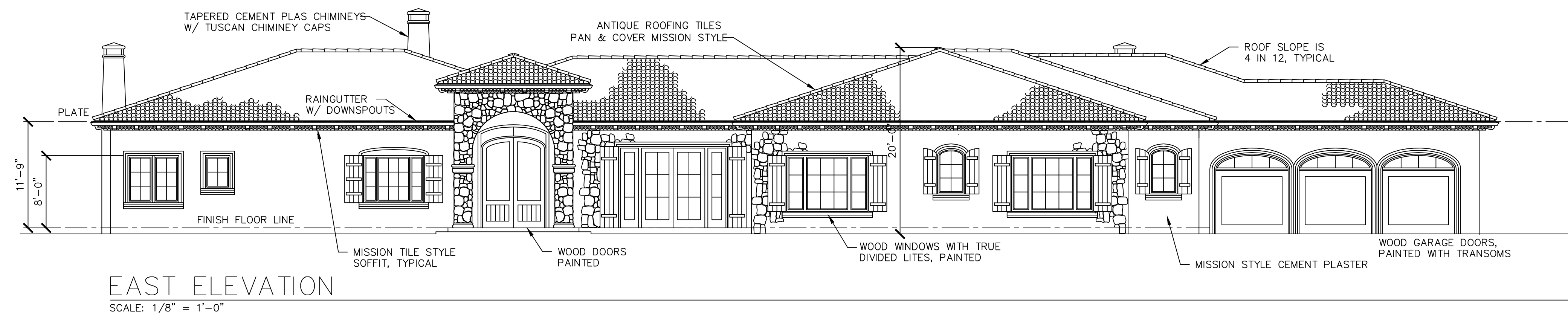
8. OCT. 2004
 REVISIONS:
 - -
 - -

PROPOSED RESIDENCE for:
 William J. Ziegler, Trustee
 11760 CAMINO ESCONDIDO
 MONTEREY COUNTY
 APN 416-082-026

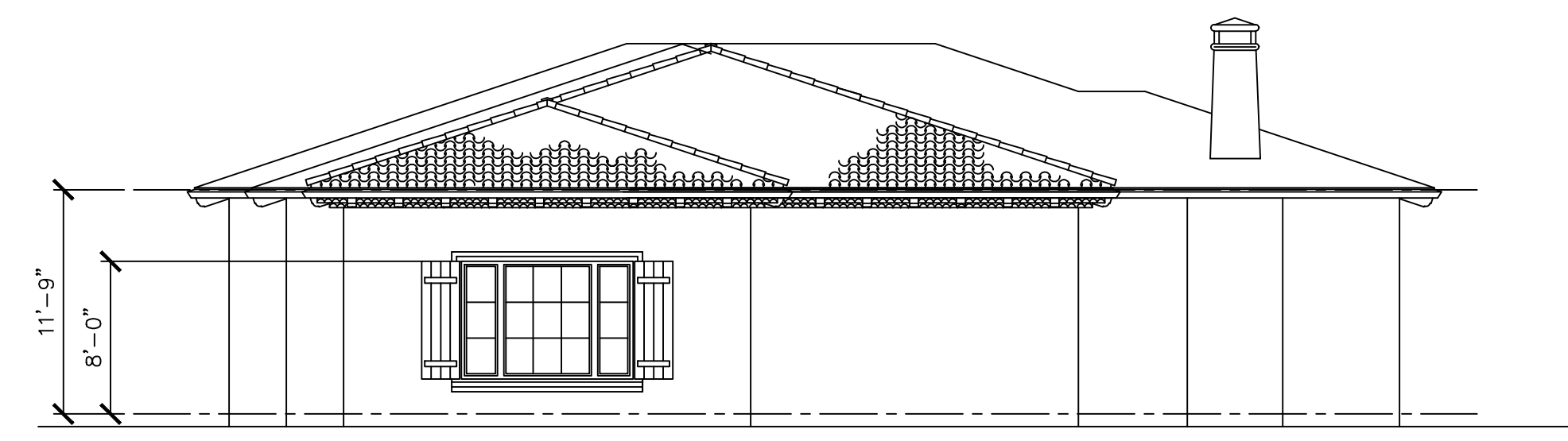
EXTERIOR ELEVATIONS
 MAIN RESIDENCE
 SCALE: 1/8" = 1'-0"

ROBERT PARAVICINI
 ARCHITECT
 3036 SLOAT ROAD
 PEBBLE BEACH, CALIFORNIA 831 373 3405
 E-MAIL NR@RPS.NET
 FAX 831 643 0187

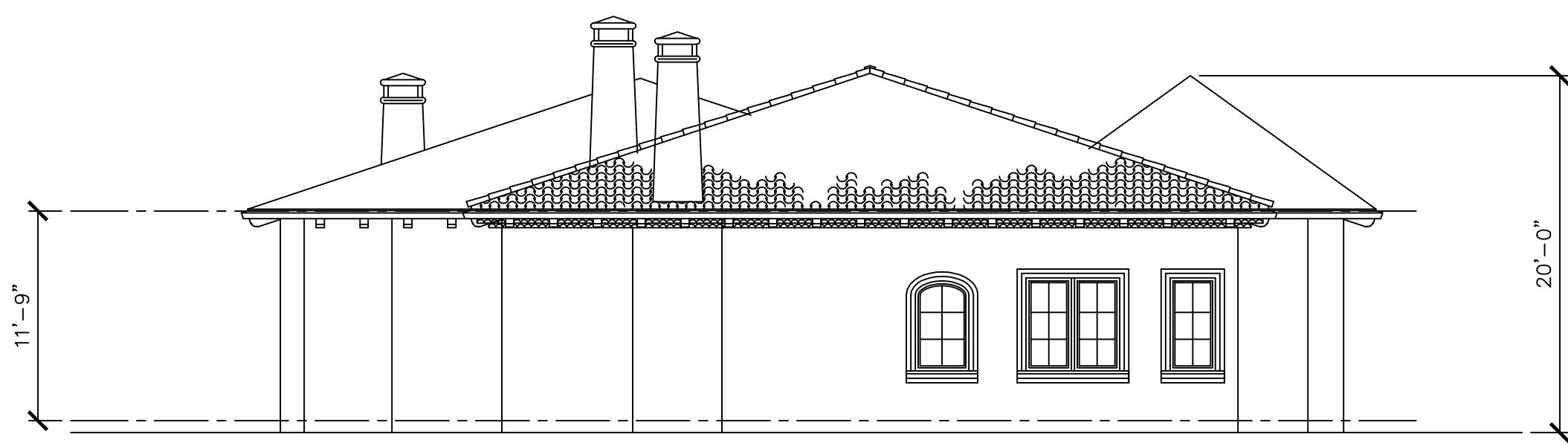
A-6



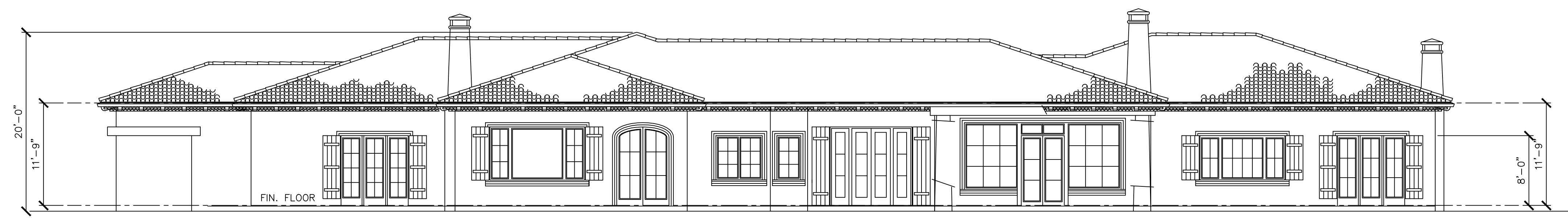
EAST ELEVATION
 SCALE: 1/8" = 1'-0"



NORTH ELEVATION
 SCALE: 1/8" = 1'-0"
 SEE EAST ELEVATION FOR MATERIALS



SOUTH ELEVATION
 SCALE: 1/8" = 1'-0"
 SEE EAST ELEVATION FOR MATERIALS



WEST ELEVATION
 SCALE: 1/8" = 1'-0"
 SEE EAST ELEVATION FOR MATERIALS