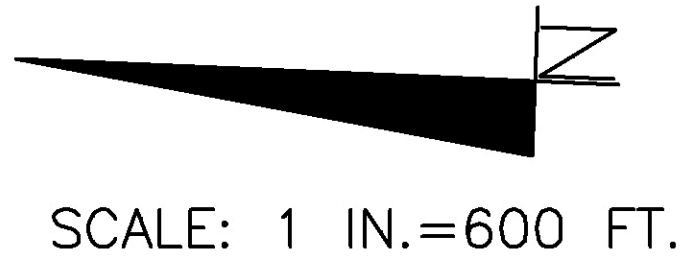


Poppy Hills Golf Course

008-031-014,015,016,017
 008-032-003,004,005,006,007
 Club Houses Office on 008-031-016

TAX CODE AREA

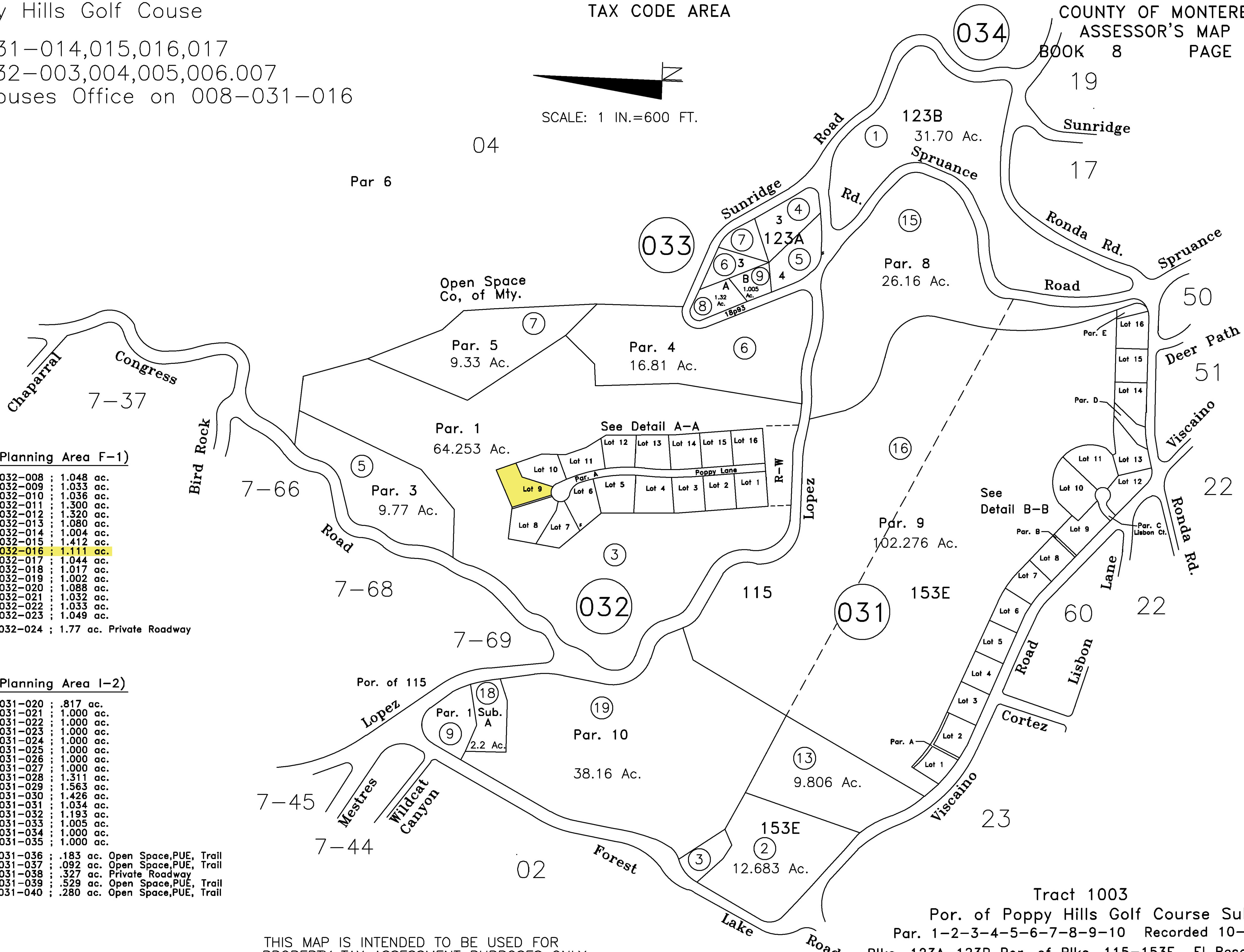


Detail A-A
 Poppy 1 (Planning Area F-1)

Lot 1 :	008-032-008	1.048 ac.
Lot 2 :	008-032-009	1.033 ac.
Lot 3 :	008-032-010	1.036 ac.
Lot 4 :	008-032-011	1.300 ac.
Lot 5 :	008-032-012	1.320 ac.
Lot 6 :	008-032-013	1.080 ac.
Lot 7 :	008-032-014	1.004 ac.
Lot 8 :	008-032-015	1.412 ac.
Lot 9 :	008-032-016	1.111 ac.
Lot 10 :	008-032-017	1.044 ac.
Lot 11 :	008-032-018	1.017 ac.
Lot 12 :	008-032-019	1.002 ac.
Lot 13 :	008-032-020	1.088 ac.
Lot 14 :	008-032-021	1.032 ac.
Lot 15 :	008-032-022	1.033 ac.
Lot 16 :	008-032-023	1.049 ac.
Par. A :	008-032-024	1.77 ac. Private Roadway

Detail B-B
 Poppy 2 (Planning Area I-2)

Lot 1 :	008-031-020	.817 ac.
Lot 2 :	008-031-021	1.000 ac.
Lot 3 :	008-031-022	1.000 ac.
Lot 4 :	008-031-023	1.000 ac.
Lot 5 :	008-031-024	1.000 ac.
Lot 6 :	008-031-025	1.000 ac.
Lot 7 :	008-031-026	1.000 ac.
Lot 8 :	008-031-027	1.000 ac.
Lot 9 :	008-031-028	1.311 ac.
Lot 10 :	008-031-029	1.563 ac.
Lot 11 :	008-031-030	1.426 ac.
Lot 12 :	008-031-031	1.034 ac.
Lot 13 :	008-031-032	1.193 ac.
Lot 14 :	008-031-033	1.005 ac.
Lot 15 :	008-031-034	1.000 ac.
Lot 16 :	008-031-035	1.000 ac.
Par. A :	008-031-036	.183 ac. Open Space,PUE, Trail
Par. B :	008-031-037	.092 ac. Open Space,PUE, Trail
Par. C :	008-031-038	.327 ac. Private Roadway
Par. D :	008-031-039	.529 ac. Open Space,PUE, Trail
Par. E :	008-031-040	.280 ac. Open Space,PUE, Trail



Tract 1003
 Por. of Poppy Hills Golf Course SubD
 Par. 1-2-3-4-5-6-7-8-9-10 Recorded 10-24-84
 Blks. 123A-123B Por. of Blks. 115-153E El Pescadero Ro.

THIS MAP IS INTENDED TO BE USED FOR
 PROPERTY TAX ASSESSMENT PURPOSES ONLY